



SHIPPING HANDBOOK  
2015/2016



An aerial photograph of a port area, showing a large body of water, a city, and an airport. The port is in the foreground, with a city extending inland. An airport is visible in the middle ground, with runways and taxiways. The background shows a city and a body of water under a blue sky.

# CONTENTS

ABOUT THE PORT	3
ACCESS	7
FACILITIES	11
SERVICES	21
SHIPPING	29
MAPS	37



The Port of Brisbane handles more than \$50 billion in freight annually, comprising over 50 per cent of Queensland's international freight trade.

WHO WE ARE	4
HEALTH AND SAFETY	4
ABOUT THE PORT	4
TRADE STATISTICS	5
TOP FIVE TRADE COMMODITIES AND MARKETS IN 2013/2014	5
PORT OF BRISBANE TOTAL TRADE	5

# ABOUT THE PORT



PROTECT THE  
ENVIRONMENT

## WHO WE ARE

The Port of Brisbane is one of Australia's fastest growing and dynamic multi-cargo ports handling over \$50 billion of international freight; equivalent to over 15 per cent of Queensland's Gross State Product.

Owned by Q Port Holdings, the Port of Brisbane Pty Ltd (PBPL) is responsible for developing and maintaining port infrastructure and facilities, and for the provision of key services including maintaining navigable access to the port for commercial shipping, and the operation of the Brisbane Multi-modal Terminal.

Located at the mouth of the Brisbane River, the Port of Brisbane's strategic location offers an efficient entry to market through direct connectivity to Australia's major road and rail networks.

PBPL is focused on driving trade and business growth by working with customers to deliver outstanding development outcomes, facilitating efficiencies and innovation, and striving to accommodate new opportunities.

## HEALTH AND SAFETY

We strive to provide a healthy and safe workplace for all of our employees, contractors and visitors ensuring health and safety remains our number one company value.

Our key objectives are to have:

- » a workplace where health and safety management and leadership is a core responsibility of our managers and supervisors
- » a workplace where health and safety management and leadership is integrated into core business activities
- » a culture that inspires awareness of and personal responsibility for health and safety
- » an occupational health and safety management system that meets AS4801 requirements and complies with statutory obligations and expectations.

## ABOUT THE PORT

- Located in South East Queensland and strategically placed at the mouth of the Brisbane River, free from urban encroachment.
- One of Australia's most diverse ports and Queensland's largest multi-cargo port, with facilities for containers, general cargo, motor vehicles and bulk.
- Room to grow, with available port land for both large and small developments, including the 90ha Port West estate and the 230ha Future Port Expansion area.
- World-class facilities including cargo-handling infrastructure, warehousing and storage areas, bulk handling and container parks.
- Over 7,500m of quayline accommodating 29 operating berths.
- Over 30 shipping lines service the Port totalling over 2,500 calls each year.
- Up to five sailing days closer to Asia than the southern ports of Sydney and Melbourne.

## TRADE STATISTICS

To assist and promote trade growth and development, we provide statistical reports and related market research. For comprehensive details of current trade statistics, including container trade and ship calls, visit the trade statistics section of our website: [www.portbris.com.au/TradeLogistics/TradeStatistics](http://www.portbris.com.au/TradeLogistics/TradeStatistics)

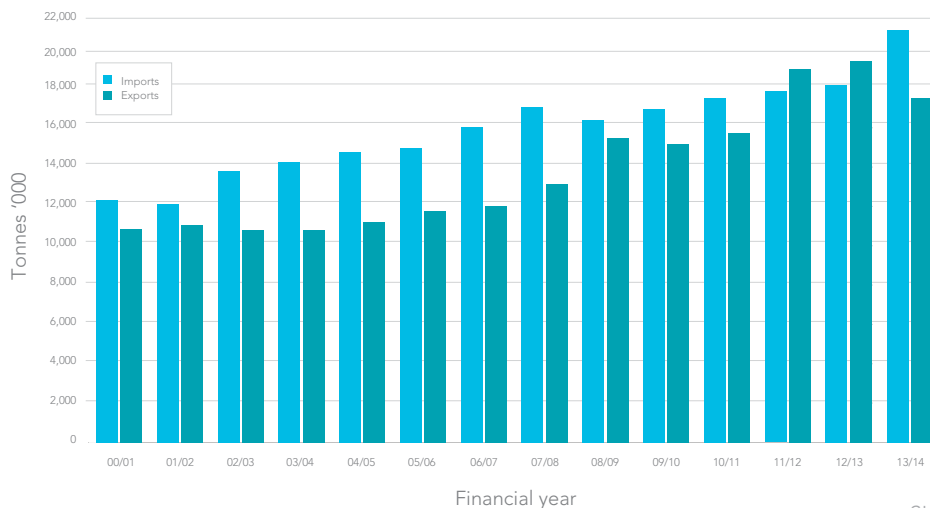
PBPL also offers an interactive trade data reporting system (DIOR) that allows customers to access the system for up-to-date, detailed, customised trade statistic reports. For information about purchasing a DIOR subscription or further details of trade trends at the Port please email: [info@portbris.com.au](mailto:info@portbris.com.au)

## TOP FIVE TRADE COMMODITIES AND MARKETS IN 2013/2014

IMPORTS			EXPORTS		
Rank	Commodities*	Country of Origin	Rank	Commodities*	Country of Destination
1	Crude Oil	Malaysia	1	Coal	Japan
2	Refined Oil	Singapore	2	Agricultural seeds	Japan
3	Cement	Australia	3	Refined Oil	Australia
4	Iron & Steel	China	4	Meat Products	Japan
5	Building products	China	5	Cotton	China

\* by tonnage

## PORT OF BRISBANE TOTAL TRADE









IF YOU SEE SOMETHING  
SAY SOMETHING  
1800 723 114

ACCESS



The Brisbane Multimodal Terminal (BMT)

## LOGISTICS NETWORK

### RAIL ACCESS

The Port of Brisbane provides access for both narrow gauge (intrastate) and standard gauge (interstate) trains via a dual gauge track. Aurizon operates Seafreighter rail services on the North Coast Line, for importers and exporters, between the Port of Brisbane and Aurizon terminals in Central, North and Far North Queensland as well as the South Western Line. Seafreighter services are designed to carry containerised product, in either 6.1m or 12.2m containers, with powered wagons offering refrigeration services to and from locations within Queensland. Aurizon also provides transport solutions to the cotton, coal and grain industries, in the form of fixed-consist train services.

### ROAD ACCESS

The Port of Brisbane provides access to interstate and intrastate locations via the Port of Brisbane Motorway (POBM). The POBM is a four lane motorway and is the key road corridor connecting the Port to the National Highway system, including the Gateway Motorway, Pacific Motorway, Logan Motorway, Ipswich Motorway, Warrego Highway and Bruce Highway. These motorways also connect to the major industrial areas of Brisbane and to the Port's hinterland.

The POBM also connects the Gateway Motorway to Port Drive. PBPL has commenced upgrade works to the three kilometres of Port Drive between the POBM and Fisherman Islands. This upgrade will increase the current two lanes to four and upgrade a number of intersections, improving road safety and efficiency.

### BRISBANE MULTIMODAL TERMINAL

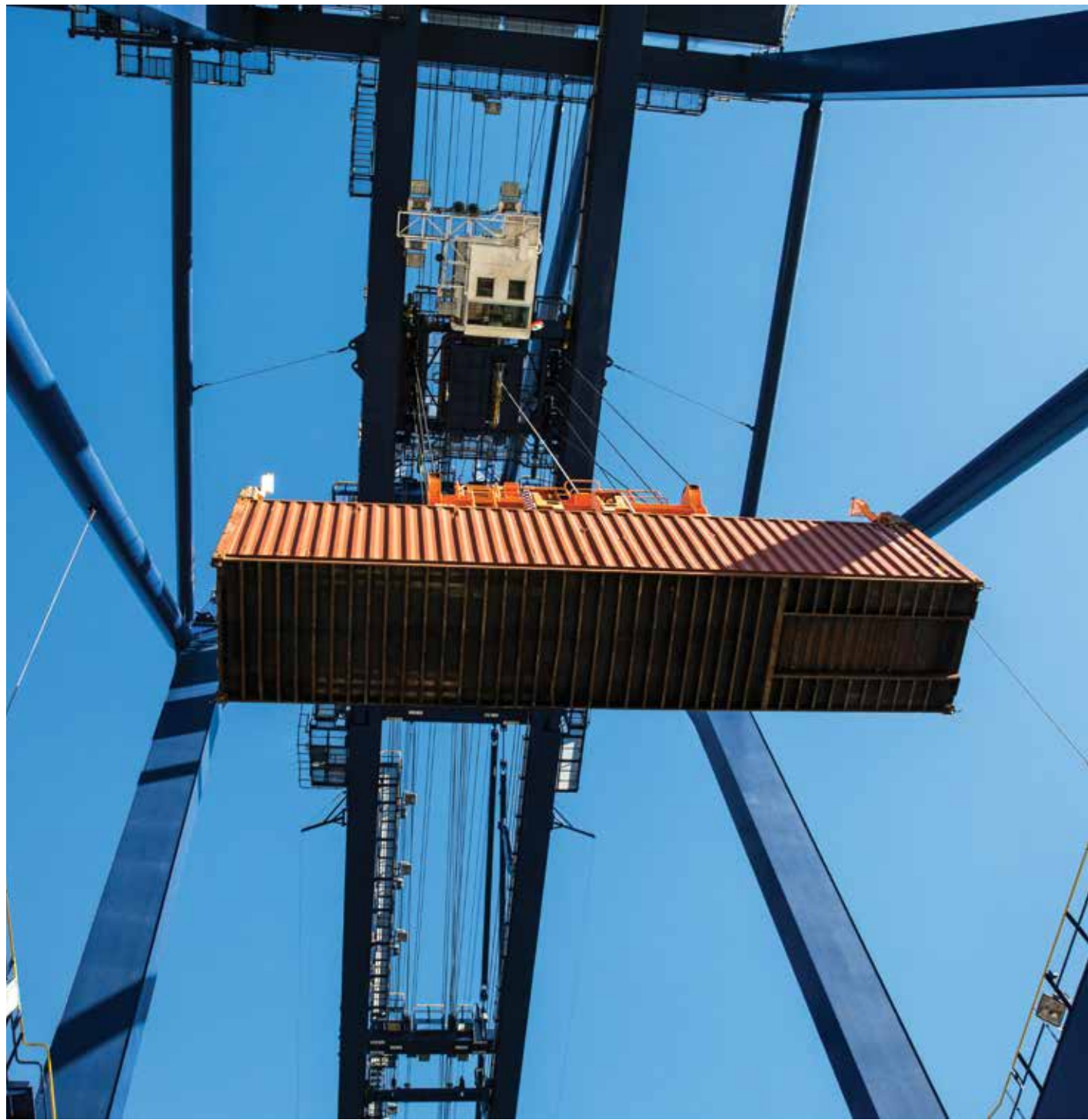
The BMT is the interface between rail, road and container terminals at the Port of Brisbane. The integration of these transport modes, a dual gauge rail link and the location of the BMT behind the container terminals enable the movement of large volumes of intrastate cargo in and out of the Port by rail. The BMT also offers interim depot solutions for import and export cargo, including break bulk cargo (i.e. storage for both dry and refrigerated import containers and pre-receiving containers for export). For enquiries, go to <https://bmtssr.portbris.com.au>

### WEIGHBRIDGE

Road users have access to a 24 hour automated weighbridge located at the BMT. The weighbridge provides auditable records of a vehicle's weight, including the total gross weight of the vehicle and weights for each individual axle group. It can also provide the product weight, which requires two weighs – one with the truck empty and the other with it loaded.

The weighbridge assists with legislative requirements like Container Weight Declarations and helps facilitate compliance with Chain of Responsibility legislation.

The weighbridge is located at 52 Port Drive. For more information on the weighbridge, go to [www.portbris.com.au/TradeLogistics/Weighbridge](http://www.portbris.com.au/TradeLogistics/Weighbridge)



# FACILITIES

PORT FACILITIES

12

BERTH DETAILS

14



SUPPORT  
ROAD SAFETY

## PORT FACILITIES

### CONTAINER TERMINALS

The Port of Brisbane has the equivalent of eight 300m container berths (2,469m of quayline), which are leased and operated by three stevedores.

DP World Brisbane leases and operates Berths 4–7, with three Post-Panamax Quay Cranes (two of which are twin-lift container cranes) one Panamax single-lift crane, 14 Automated Stacking Cranes and 14 Shuttle Carriers.

Patrick leases and operates Berths 8–10, with four Post-Panamax Quay Cranes, one Panamax Crane and 31 Automated Straddle Carriers.

Brisbane Container Terminals occupies Berth 11 and 12. Equipment includes four Post-Panamax Quay Cranes and six Automated Stacking Cranes.

PBPL owns the wharves, providing significant proportion of fixed improvements, and issues priority-use licences and leases for their operation.

### GENERAL CARGO AND MOTOR VEHICLES

The Port of Brisbane has 697m of general-cargo wharves, which can handle break-bulk cargo, containers, motor vehicles, and other roll on/roll off cargo. Australian Amalgamated Terminals (AAT) leases and manages Berths 1–3, with various stevedores loading and unloading ships at these berths.

AAT manages cargo receipt and delivery. The berths are equipped with one conventional Panamax Container Crane and one mobile Harbour Crane. The Grain Berth has been extended by 50m to accommodate some pure car carrier vessels. This berth can be used for motor vehicles, when necessary.

Heavy loads in excess of 90t require PBPL's approval to transit between wharves 1–10 at Fisherman Islands. Other wharf load constraints are available on application. Please contact PBPL Port Operations on (07) 3258 4686 for more information.

## DRY-BULK TERMINALS

The Port's dry-bulk facilities have flexible operational arrangements, with some fully dedicated to a particular user and others sharing wharf facilities with non-bulk trades.

### PORT OF BRISBANE

Name of terminal	Owner or user
➤ Coal Terminal	Queensland Bulk Handling Pty Ltd
➤ Grain/Cottonseed/Sugar Terminal	GrainCorp
➤ Cement/clinker plant	Sunstate Cement Ltd
➤ Woodchips Terminal	Queensland Commodity Exports Pty Ltd
➤ General Purpose Berth	Port of Brisbane Pty Ltd

### UPRIVER

Name of terminal	Owner or user
➤ Pinkenba Bulk Terminal	GrainCorp
➤ Pinkenba Common User Berth	Port of Brisbane Pty Ltd
➤ Pinkenba and Gibson Island Fertiliser/Chemical Plant	Incitec Pivot
➤ Queensland Bulk Terminal	Wilmar Gavilon
➤ Hamilton wharves	QUBE Stevedoring

\* Over the next few years these facilities will be progressively relocated. Most wet-bulk facilities at the port are either crude-oil or refined-product berths.

## WET-BULK

Brisbane has two oil refineries – Caltex at Lytton and BP at Bulwer Island\* – each with a crude-oil berth used principally for imports, and a products berth used for refined exports. Viva Energy (Pinkenba), GrainCorp Liquid Terminals (Pinkenba) and Puma Energy (Eagle Farm) also handle refined products through the Port at the Pinkenba Common User Berth.

Animal and vegetable oils and chemicals are moved through terminals at Pinkenba and Hamilton.

\* BP has announced plans to close their refinery by mid 2015.

## BERTH DETAILS

Wharf	Operator	Wharf Use*	Wharf Length (m)	Berth pocket Length x Width (m)	Nominal Depth LAT # (m)
No. 12	Brisbane Container Terminal	Containers	310	310 x 45	14
No. 11	Brisbane Container Terminal	Containers	350	350 x 45	14
No. 10	Patrick Terminals	Containers	396	396 x 45	14
No. 9	Patrick Terminals	Containers	317	317 x 45	14
No. 8	Patrick Terminals	Containers	220	220 x 45	14
No. 7	DP World Brisbane	Containers	200	200 x 45	14
No. 6	DP World Brisbane	Containers	150	150 x 45	14
No. 5	DP World Brisbane	Containers	250	250 x 45	14
No. 4	DP World Brisbane	Containers	302	302 x 45	14
No. 3	AAT	Containers, ro/ro, general cargo, motor vehicles	299	299 x 45	14
No. 2	AAT	Containers, ro/ro, general cargo, motor vehicles	200	200 x 45	14
No. 1	AAT	Containers, ro/ro, general cargo, motor vehicles	197	197 x 45	14
General Purpose Berth	PBPL	Dry-bulk and break-bulk	213	213 x 50	11.5
Caltex Crude	Caltex Refineries Ltd	Crude oil discharge and load	91.4	400 x 50	14.3
Caltex Products	Caltex Refineries Ltd	Petroleum products	81	285 x 35	10.3**



Services	Equipment and Facilities
Electricity/Telephone/Water	Dry Cargo – 730 ground slots Refrigerated Cargo – 350 teus plug points Four Post Panamax Quay Cranes, six Automated Stacking Cranes, six Shuttles, two Reachstackers, two Prime Movers and four x ITVs
Electricity/Telephone/Water Electricity/Telephone/Water Electricity/Telephone/Water	Dry Cargo – 5,766 ground slots. Refrigerated Cargo – 1,796 plug points. Terminal serviced by 31 automated straddle carriers and five gantry cranes: three 75t and one 58t.
Electricity/Telephone/Water Electricity/Water Electricity/Water Electricity/Water	Dry Cargo – 3,486 Refrigerated Cargo – 895 Terminal serviced by three Post-Panamax cranes (two of which are twin-lift container cranes), one Panamax single-lift crane, 23 dedicated container handlers and 24 internal transfer. All four cranes access Berths 4, 5, 6 and 7
Electricity/Telephone/Water  Electricity/Telephone/Water  Electricity/Water	Refrigerated Cargo – 160 plug points Total storage: 1,500 teus Motor vehicles across – 4,500 Storage sheds: 15,000m <sup>2</sup> Terminal serviced by forklifts: twelve 16t, three 7t and four 4t; five top-lift; four 32t low profile and one 28t low profile. Five dock trucks. One twin-lift mobile harbour crane – max lift 100t One 66t single-lift container crane.
Electricity/Water	1.5ha terminal – open storage
Electricity/Fuel oil/Water	Crude oil: one 600mm pipeline Three 250mm pipelines with connections Bunker fuel: one 150mm pipeline and connection Discharge: 3,000 – 4,000tph. Load: 250 – 620tph
Diesel Oil/Electricity/ Fuel Oil/Water	Four 200mm connections Discharge: 200 – 1,000tph Load: 200 – 1,000tph

## BERTH DETAILS CONTINUED

Wharf	Operator	Wharf Use*	Wharf Length (m)	Berth pocket Length x Width (m)	Nominal Depth LAT # (m)
Viva Energy	Viva Energy Australia	Petroleum products	74	234 x 35	10.9
BP Crude	BP Oil Australia	Crude oil/feedstocks discharge, load and discharge petroleum products	15	329 x 50	14.3
BP Products	BP Oil Australia	Petroleum products load and unload LPG	35	235 x 35	10.9
Grain	GrainCorp	Grain, woodchips, cottonseed exports, motor vehicles	285	285 x 45	13
Pinkenba Common User Berth	GrainCorp/Puma Energy	Grain, silica sand, other dry-bulk handling, general cargo, soya bean meal, fertiliser, petroleum products	314	412 x 35	10.4
Cement Australia	Cement Australia	Bulk clinker, gypsum, slag imports and plasterboard	128	200 x 35	9.7
Bulk Berth No 1	Old Bulk Handling Pty Ltd	Coal exports	240	317 x 50	14
Incitec North	Incitec Ltd	Bulk liquid and bulk dry fertiliser	123	210 x 35	10

## Services

## Equipment and Facilities

Electricity	Two 200mm white oil lines, one 250mm black oil line, one 250mm bitumen line, and one 200mm lube oil line Discharge and bunkering: 200 – 900tph One 100mm AGO bunker line Load: 100tph. One 150mm LPG pipeline Load and discharge: 100tph
Telephone (not for ship)/Water/ Fuel oil (by barge)/ Telephone (mobile – through agent)	Crude oil/feedstocks: two 300mm booms connected to one 500mm pipeline Discharge rate: 3,200tph Petroleum products: one 200mm boom connected to one 200mm pipeline Load/discharge rate: 450tph
Diesel oil/Telephone (not for ship)/Water/Fuel oil (by barge)/ Telephone (mobile – through agent)	Petroleum products: two 200mm booms with two 200mm pipelines. Load/discharge 400 – 900tph (gas oil), 380tph (motor spirits). LPG: (for BP) one 150mm pipeline for liquid and one 80mm for vapour; (for Origin) one 250mm pipeline for liquid, one 100mm for vapour
Electricity/Telephone/Water	Grain loading: up to 1,500tph Silo storage: 60,000t Woodchips loading: 700tph Cottonseed loading: 600tph Sugar/cottonseed shed: 40,000t Pad storage: 100,000t
Electricity/Telephone/Water	Total storage shed: 80,000t Total silo storage: 62,000t Total open area: 25,000t Mobile gantry loader. Load up to 1,200tph Two import hoppers each 300tph. Direct to truck Direct to silo. Direct to shed Terminal hardstand 1.0ha
Electricity/Telephone/Water	Cement clinker: receival hopper with travelling grab crane bucket Discharge: up to 400tph. Storage shed: 30,000t Storage shed: 80,000t Storage shed: 5,000t
Electricity/Telephone/Water	Coal loading up to 3,000tph. Average 2,000tph Stockpile storage: 900,000t Receival by rail: average 2,000tph
Electricity/Water	Bulk-cargoes: loaded into two 30ft hoppers using ship cranes Storage capacity: 50,000t Bulk liquids storage: Sulphuric 15,100t, caustic soda 5,500t

## BERTH DETAILS CONTINUED

Wharf	Operator	Wharf Use*	Wharf Length (m)	Berth pocket Length x Width (m)	Nominal Depth LAT # (m)
Incitec South	Incitec Ltd	Bulk liquid and bulk dry cargoes	152	220 x 35	10.4
GrainCorp Liquid Terminals	GrainCorp	Bulk flammable and combustible liquids	50	208 x 35	10.5
Maritime No 1 (Dolphin Berth)	PBPL	Bulk oil and chemicals, other wet-bulk	32	218 x 35	9
Hamilton No 4	Qube Logistics	General cargo, containers, bulk cargo	240	240 x 35	10.3
Cruise Terminal	Brisbane Cruise Terminal	Passenger vessels	386	237 x 35***	8.8***
Queensland Bulk Terminal	Wilmar Gaviion	Bulk cargo	158	270 x 35	10

# Lowest astronomical tide.

\* Heavy loads in excess of 90t require PBPL's approval to transit between wharves 1–10 at Fisherman Islands. Other wharf load constraints are available on application.

\*\* Pending declaration by Regional Harbour Master.

\*\*\* Adjacent Hamilton No.1 Berth also available. For depth maintenance of both berths contact Brisbane Cruise Terminal.

Please contact the wharf owner and/or operator to receive detailed technical specifications for each wharf.

Services	Equipment and Facilities
Electricity/Telephone/Water	Bulk dry cargoes: fixed gantry ship loader, and one 30ft hopper using ship or mobile cranes Load: 200tph Storage capacity: 50,000t Bulk liquids storage: ammonia – 10,000t
Electricity (not for ship)/ Telephone (not for ship)/ Water	Bulk liquid storage, discharge and shipment, multiple docklines. Discharge: 200 – 400tph. Storage capacity: 40,000m <sup>3</sup> . Laboratory, weighbridge, road tanker cleaning facility, isotainer heating
Electricity/Telephone/Water	Wet-bulk facility, bulk liquid discharge
Electricity/Telephone/Water	Please contact Qube Logistics for details
Electricity/Telephone/Water	Please contact Brisbane Cruise Terminal for details
Electricity/Telephone/Water	Please contact Queensland Bulk Terminal for details



# SERVICES

NAVIGATION AND OPERATION	22
PORT PROCEDURES MANUAL	24
COMMUNICATION	24
DGTRAC – DANGEROUS GOODS TRACKING	25
PORT SECURITY	25

# NAVIGATION AND OPERATION

## HARBOUR MASTER

Under the *Transport Operations (Marine Safety) Act 1994*, control of navigation in the port is the responsibility of the Regional Harbour Master, an officer of Maritime Safety Queensland. Vessel Traffic Services is responsible for shipping movements in the pilotage area and operates 24-hours a day. If you require any information regarding ships, ports or other maritime matters, visit the Maritime Safety Queensland website at [www.msq.qld.gov.au](http://www.msq.qld.gov.au)

### REGIONAL HARBOUR MASTER

Maritime Safety Queensland  
Marine Operations Base  
MacArthur Avenue East  
Pinkenba QLD 4008  
Ph: (07) 3632 7500  
Fx: (07) 3305 1708  
Email: [rhmbris@msq.qld.gov.au](mailto:rhmbris@msq.qld.gov.au)  
Website: [www.msq.qld.gov.au](http://www.msq.qld.gov.au)

### VESSEL TRAFFIC SERVICES

Brisbane Port Control  
Marine Operations Base  
MacArthur Avenue East  
Pinkenba QLD 4008  
Ph: (07) 3305 1700  
Fx: (07) 3305 1708  
Email: [vtsbrisbane@msq.qld.gov.au](mailto:vtsbrisbane@msq.qld.gov.au)  
Website: [www.qships.transport.qld.gov.au](http://www.qships.transport.qld.gov.au)

Disclaimer: Information given in this section is accurate at the time of printing and is subject to change without notice.

## POSITION

The Port of Brisbane is located between Latitude 26°39' south and 27°41' south, and between Longitude 153°0' east and 153°30' east.

## CHARTS

Admiralty chart references

AUS 235	AUS 237
AUS 236	AUS 238

## DEPTHS

Alongside depths of general-cargo berths are between 9m and 14m; container berths up to 14m; oil berths up to 14.3m; Port of Brisbane grain berth is 13m; and coal berth 14m.

## TIDES

At the Standard Port of Brisbane Bar the Mean High Water Spring (MHWS) is 2.17m above Lowest Astronomical Tide (LAT) and the Mean High Water Neap (MHWN) is 1.78m above LAT.

The Highest Astronomical Tide (HAT) is 2.73m above LAT.

Flinders National Tidal Facility provides annual tidal predictions, and Queensland Transport's Tide Tables and Boating Guide is published annually. Tide times can also be accessed via the Bureau of Meteorology website at [www.bom.gov.au/oceanography/tides](http://www.bom.gov.au/oceanography/tides)



## WATERSIDE ACCESS

Access to the Port of Brisbane is via Moreton Bay, where deep-water channels are a minimum 280m wide from Fairway Beacons (FWB) to Entrance Beacons, and the minimum depth is 15m LAT. Pilotage is compulsory for ships over 50m Length Overall (LOA). All ships of 35m LOA and over must report their movements to Port Control.

## DRAFT/MINIMUM UNDER KEEL CLEARANCE

Minimum Under Keel Clearances (UKC) for Moreton Bay vary according to the vessel's draft and the route taken. Tidal windows are calculated using the DUKC® (Dynamic Under Keel Clearance) system. If a tanker's or bulk carrier's draft exceeds 12.5m or a container ship's draft exceeds 12.0m, then a tidal window will be calculated.

The Brisbane River is dredged to 9.1m LAT upstream of the Fisherman Islands swing basin and a minimum UKC of 0.6m is required. This UKC increases with draft.

Minimum UKC alongside any wharf is 0.3m. UKC windows for both the bay and river can be obtained from Brisbane Vessel Traffic Service.

## REPORTING POINTS

### ARRIVALS

All vessels entering Brisbane port limits must call "Brisbane VTS" on VHF channel 12 at the following times:

- when the pilot is on board, giving FWB time, ETA Entrance Beacons, channels used, draft, and, if at anchor, anchor aweigh time
- when passing the Fairway Buoy (Customs requirement)

- 30 minutes prior to passing Entrance Beacons to Bar Cutting when passing Entrance Beacons, advising all river traffic of time at berth (named) and whether berthing head-up, head-down or swinging (name basin)
- after secured alongside, giving time of first line, whether vessel is berthed head-up or head-down, confirm vessel all fast and time of all fast
- upon anchoring at Brisbane Roads, vessel should provide anchorage position as a bearing and distance from Entrance Beacons.

### DEPARTURES

All vessels removing or departing from a wharf or anchorage within Brisbane port limits must call "Brisbane VTS" at the following times:

- one hour before departure, confirming ETD and radio check
- five minutes prior to weighing anchor or departing berth, giving details of intended movement, including whether heading upstream, downstream and/or swinging, draft, pilot's name and boarding time
- upon weighing anchor or letting go, giving time of anchor aweigh or last line, confirming details of movement, and giving ETA at Entrance Beacons and/or berth. Also advise draft, pilot's name and boarding time
- when passing Entrance Beacons outbound, giving ETA at pilot boarding ground and/or Fairway Buoy, channels to be used, next port
- following the transfer of the pilot to the pilot launch, "Brisbane VTS" should be informed of the transfer time.

## HEIGHT

The height under the Brisbane Gateway Bridge, with the construction of the duplicate bridge, is 54.4m at the centre of the span and 50.8m at the cutting edge above HAT.

Vessels with an uppermost height (air draft) exceeding 48m must obtain written permission from the Manager (Vessel Traffic Management) before passing under the bridge.

## PORT PROCEDURES MANUAL

The Port Procedures Manual for the Port of Brisbane lists in detail all vessel-movement, restriction, communication, towage, pilotage, emergency, navigation, berth, channel, depth and swing-basin information.

The manual is available on the MSQ website:  
[www.msq.qld.gov.au/Shipping/Port-procedures/Port-procedures-brisbane.aspx](http://www.msq.qld.gov.au/Shipping/Port-procedures/Port-procedures-brisbane.aspx)

## COMMUNICATION

### COMMUNICATIONS

Brisbane Vessel Traffic Service call sign is "Brisbane VTS". The following VHF Channels are used:

VHF Ch 16	Call up, answering, emergencies
VHF Ch 12	Working channel, port operations
VHF Ch 67	Small craft
VHF Ch 6, 8, 9, 10	Pilots and tugs
VHF Ch 63, 73	Water Police and Coastguard

### NOTIFICATIONS OF ETA

Masters of all vessels arriving at Brisbane should keep their agents informed of their ETA and arrival draft. Agents should inform Brisbane Port Control, "Brisbane VTS", 48 and 24 hours prior to the tentative ETA of vessels.

If this subsequently varies by more than one hour, the agent should inform VTS so that the shipping schedule can be modified. Masters can also confirm their ETA direct to Brisbane Vessel Traffic Services:

Ph: (07) 3305 1700 (24 hours)  
Fx: (07) 3305 1708  
Email: [vtsbrisbane@msq.qld.gov.au](mailto:vtsbrisbane@msq.qld.gov.au)

Masters should contact "Brisbane VTS" on VHF channels 12 or 16 at a minimum of two hours and then one hour prior to arrival at Point Cartwright to confirm ETA and obtain pilot's boarding/ladder information.

## DGTRAC – DANGEROUS GOODS TRACKING

All dangerous goods must be lodged through PBPL's DGTRAC. This is a mandatory online system for tracking the movement of dangerous goods. A Port Notice, issued under the *Transport Infrastructure Act 1994* (Qld) to all shipping companies, sets out the requirements for handling dangerous goods in the Port of Brisbane. [www.portbris.com.au/shippingoperations/portnotices](http://www.portbris.com.au/shippingoperations/portnotices)

DGTRAC allows for more accurate tracking of core information, which is then provided to statutory bodies such as AMSA, MSQ and the Chief Inspector of Explosives. If you have a DGTRAC account, you can lodge information via:

- an EDI file (format based on international standard IFTDGN)
- Manual web lodgement via [www.portbris.com.au](http://www.portbris.com.au)

For companies moving dangerous goods throughout the port that have not set up a DGTRAC account, please contact (07) 3258 4686 or [dgtrac.admin@portbris.com.au](mailto:dgtrac.admin@portbris.com.au)

## PORT SECURITY

The Port of Brisbane security regime is fully compliant with the requirements of the International Ship and Port Facility (ISPS) Code, to meet international obligations under the International Maritime Organisation's Safety of Life at Sea Convention 1974. With security plans approved and audited by the Department of Infrastructure and Transport, the Port's national security obligations under the *Maritime Transport and Offshore Facilities Security Act 2003* have been achieved and maintained.

The Port has an active Port Security Committee, ensuring a uniform approach to security responsibilities across all areas of the Port and the maintenance of Port-wide security objectives.

Through this Committee, the Port has developed a Port Wide Risk Assessment for use by all facilities in determining port-wide risks. By assessing and adding site-specific risks, Port users can add mitigation measures to improve the overall security and safety of their maritime security zones, and the Port.

A range of maritime-specific security procedures have been developed by PBPL's Port Security team. These security procedures have gained international best practice recognition and awards. PBPL maintains a high-level security service, consisting of Port-wide closed-circuit television monitoring, water and land based security guarding and patrolling, issuing of Maritime Security Identification Cards, and access control arrangements. Cost recovery for these services occurs through a cargo-based fee, a user-pays cost recovery system for mandatory access-control and waterside security requirements, and Maritime Security Identification Card issuing.

PBPL operates a 24-hour Port Security Control Centre and can be contacted by calling (07) 3258 4601 or 1800 723 114. [www.portbris.com.au/aboutus/security](http://www.portbris.com.au/aboutus/security)

## CHANNELS AND REACHES

Location	Declared Depth (LAT)	
North West Channel	15	(280m wide)
Spitfire Channel	15	(590m wide)
East Channel	15	(300m wide)
Main & Bay Crossing E5 to entrance beacons – deep water	14.7	(300m wide)
Bar Cutting (River entrance)	14.0	(180m wide)*
Pelican Banks Cutting to Hamilton Reach	9.1	(120m wide)

## SWING BASINS

Location	Declared Depth (LAT)	
Fisherman Islands	14.0	(493m wide)**
Lytton & Quarantine	9.1	(255m wide)**
Pinkenba	9.1	(331m wide)**
Hamilton	9.1	(398m wide)

\* Day and night centre line and shoulder leading lights.

\*\* Widths assume vessels at adjacent berths.

## PILOTAGE

Pilotage is compulsory for every ship that is 50m LOA or more, or any ship if directed by the Harbour Master. This does not apply to ships with masters holding a pilotage exemption certificate.

The pilot boarding ground is 3 nautical miles south-east of Point Cartwright. (Pilots may board or disembark outside these limits by prior arrangement.)

Requests for pilots should be made via the ship's agent, giving at least 48 hours' notice. Brisbane Marine Pilots maintains a 24-hour listening watch on VHF channel 12. ETA at the boarding ground should be confirmed at least two hours before arrival by calling "Brisbane Harbour" on VHF channel 12.

Pilots embark and disembark using fast, yellow-hulled launches. Ships are requested to provide a good lee, and maintain a speed of seven knots when embarking or disembarking their pilot. Pilot ladders should be rigged in accordance with SOLAS regulations and ISO standards, 2m above the water, with two man-ropes and a heaving line standing by.

Distances from the boarding ground:

- Entrance Beacons 70km (42nm)
- Fisherman Islands 80km (48nm)
- Hamilton Reach Berths 89km (54nm)

Brisbane Marine Pilots Pty Ltd contact information is available at [www.brisbanepilots.com.au](http://www.brisbanepilots.com.au)

## PORT CHARGES

Use of Port of Brisbane Pty Ltd (PBPL) facilities attracts charges as defined in the pricing schedule (all prices are inclusive of GST). By using the facilities you agree to be bound by the terms and conditions contained within this schedule and all other relevant PBPL documentation.

For more information and to view the Schedule of Port Charges, please visit [www.portbris.com.au/ShippingOperations/PortCharges](http://www.portbris.com.au/ShippingOperations/PortCharges)

## ENVIRONMENTAL PERMITS & WASTE DISPOSAL

### Painting

Painting within port limits requires a permit from PBPL. Permits set out specific conditions which must be met. You can obtain a permit by visiting [www.portbris.com.au/shipping-operations/permits-and-forms](http://www.portbris.com.au/shipping-operations/permits-and-forms)

### Hull cleaning and biofouling

In-water cleaning (with the exception of propeller polishing) is prohibited within port limits.

### Waste

Waste Type	Discharge Allowance (within port limits)	Disposal ashore	Regulator/ Further Information
Black and grey waters and untreated sewage	No allowance	Via a licensed contractor	Maritime Safety Queensland
Treated sewage (IMO approved systems)	Discharge is permissible in certain locations subject to a number of strict conditions.	Via a licensed contractor	Maritime Safety Queensland
Oil and oily mixtures	No allowance	Via a licensed contractor	Maritime Safety Queensland
Garbage	No allowance	Via a licensed contractor. AQIS approval for international vessels	Australian Quarantine and Inspection Service
Plastics, metals and timbers	No allowance	Via a licensed contractor	Maritime Safety Queensland
Incinerator usage	No allowance		Australian Maritime Safety Authority
Ballast water	Discharge of high risk ballast water is prohibited unless for safety reasons and must be reported to the Regulator.	No facilities	Australian Quarantine and Inspection Service



The Port of Brisbane Pty Ltd provides security services 24 hours a day, seven days a week.

SHIPPING

## SHIPPING LINES & AGENTS

Shipping/Agency contacts	Service by Region	Representing
<p><b>Austral Asia Line Pte Ltd</b></p> <p>Ground Floor, South Tower, 527 Gregory Terrace, Bowen Hills QLD 4006 (07) 3332 8555 sales@australasialine.com www.australasialine.com</p>	<p>East Asia, North Asia, South East Asia, Pacific Islands</p>	<p>Austral Asia Line</p>
<p><b>ANL Container Line</b></p> <p>110 Eagle Street, Brisbane QLD 4000 (07) 3233 2233 mtravers@anl.com.au www.anl.com.au</p>	<p>Africa, North Asia, East Asia, South East Asia, Europe Middle East, Americas South America, Indian Subcontinent Pacific Islands (inc New Zealand)</p>	<p>ANL Container Line; Toyofuji; Del Mas</p>
<p><b>APL Lines (Australia)</b></p> <p>Unit 3, 1155 Wynnum Road, Cannon Hill QLD 4170 (07) 3218 2400 sharon_ralph@apl.com www.apl.com</p>	<p>North Asia, East Asia, South East Asia, Europe, Indian Subcontinent, Middle East, North America including East &amp; West coast, South America, Pacific Islands (inc New Zealand)</p>	<p>American President Lines</p>
<p><b>Asiaworld Shipping Services Pty Ltd</b></p> <p>Suite 4, Level 3, 87 Wickham Tce, Spring Hill QLD 4000 (07) 3839 4235 aw.brisbane@asiaworld.com.au www.asiaworld.com.au</p>		<p>Biglift Shipping BV (Amsterdam); OneSteel (Brisbane); Spliethoff Line (Amsterdam); Intermarine Shipping, Malaysia; Thorco Shipping, Singapore; Various tramp trades; Seven Star Yacht Transport (Amsterdam)</p>
<p><b>China Shipping (Aust) Agency Co Pty Ltd</b></p> <p>Level 1, Astor Centre, 445 Upper Edward Street, Spring Hill QLD 4000 brisbane@cshipping.com.au www.chinashippingaustralia.com</p>	<p>East Asia, North Asia, South East Asia, Middle East, Europe, New Zealand</p>	<p>China Shipping Container Lines</p>
<p><b>CMA-CGM</b></p> <p>Level 6, 110 Eagle Street, Brisbane QLD 4000 bri.whitfield@cma-cgm.com (07) 3233 2252 www.cma-cgm.com</p>	<p>Africa, Europe, Indian Subcontinent, Middle East, North America, East Coast, South America, South East Asia</p>	<p>CMA-CGM</p>



Shipping/Agency contacts	Service by Region	Representing
<p><b>Evergreen Shipping Agency (Aust ) Pty Ltd</b>  Level 1, Suite 101, 303–309 Adelaide Street,  Brisbane QLD 4000  (07) 3237 7377  bbnemcbiz@evergreen-shipping.com.au  www.evergreen-line.com</p>	<p>Africa, North Asia, East Asia,  South East Asia, Europe,  Indian Subcontinent, Middle  East, North America East &amp;  West Coast, South America</p>	
<p><b>Five Star Shipping</b>  Level 6, 12 Creek Street, Brisbane QLD 4001  (07) 3215 1100  www.fivestarshipping.com.au</p>	<p>East Asia, North Asia, South  East Asia, Europe, Indian  Subcontinent, Middle East,  New Zealand</p>	<p>COSCO</p>
<p><b>Gearbulk</b>  Suite 7, 1st Floor Pier 35,  263 Lorimer Street, Port Melbourne VIC 3207  (03) 9646 8344  melbourne@gearbulk.com  www.gearbulk.com</p>	<p>Americas, East Asia,  South East Asia, Indian  Subcontinent, Middle East,  New Zealand</p>	<p>Gearbulk</p>
<p><b>Gulf Agency Company (Australia) Pty Ltd</b>  The Moorings on Rivergate,  Unit 1b, 20 Rivergate Place, Murarrie QLD 4172  (07) 3390 6420  shipping.brisbane@gac.com  www.gac.com</p>		<p>Various Global Liner, Wet  &amp; Dry Bulk Tramp vessel  Operators &amp; Owners</p>
<p><b>Hanjin Shipping Australia Pty Ltd</b>  Level 3, South Tower, 527 Gregory Tce,  Fortitude Valley QLD 4006  (07) 3252 6800  jwiddis@au.hanjin.com  www.hanjin.com</p>	<p>Africa, East Asia, North Asia,  South East Asia, Europe,  Indian Subcontinent,  Middle East, North America  East &amp; West Coast, South  America, New Zealand</p>	<p>Hanjin Shipping</p>
<p><b>Hamburg Sud Australia Pty Ltd</b>  Level 13, 500 Queen Street, Brisbane QLD 4000  (07) 3834 0400  garry.sydes@hamburgsud.com  www.hamburgsud.com</p>	<p>Africa, North Asia, East Asia,  South East Asia, Europe,  Indian Subcontinent, Middle  East, New Zealand, North  America East &amp; West coast,  Pacific Islands, South America</p>	<p>Hamburg Sud</p>

## SHIPPING LINES & AGENTS CONTINUED

Shipping/Agency contacts	Service by Region	Representing
<p><b>Hapag-Lloyd (Aust) Pty Ltd</b>                      Unit 3, 463 Nudgee Road, Hendra QLD 4011                      (07) 3630 2347                      hugh.mackay@hlag.com                      www.hlag.com</p>	<p>Africa, China, East Asia, South East Asia, Europe, Indian Subcontinent, Middle East, North America East &amp; West coast, North Asia, Pacific Islands (inc New Zealand), South America</p>	<p>Hapag-Lloyd (Aust) Pty Ltd</p>
<p><b>Inchcape Shipping Services</b>                      Unit 16, 35 Paringa Road                      Murarrie QLD 4172                      (07) 3032 8500                      Brisbane@iss-shipping.com                      www.iss-shipping.com</p>	<p>North Asia, East Asia, South East Asia</p>	<p>Representing various tramp and liner principals worldwide                      Hyundai Merchant Marine (HMM) Matson</p>
<p><b>"K" Line (Australia) Pty Ltd</b>                      Level 6, 193 North Quay, Brisbane QLD 4000                      (07) 3227 4900                      brillbris@klineaus.com.au                      www.kline.com.au</p>	<p>East Asia, North Asia, South East Asia, Indian Subcontinent, Middle East</p>	<p>"K" Line</p>
<p><b>Maersk Australia Pty Ltd</b>                      Level 8, 383 Kent Street, Sydney NSW 2000                      www.maerskline.com                      (02) 9696 9696                      australiaexports@maersk.com                      australiaimports@maersk.com</p>	<p>Africa, North Asia, East Asia, South East Asia, Europe, Indian Subcontinent, Middle East, North America, East &amp; West coast, Pacific Islands (inc New Zealand), South America</p>	<p>Maersk Line</p>
<p><b>Mediterranean Shipping Co. (Aust) Pty Ltd</b>                      Unit 14, 16 Metroplex Avenue, Murarrie QLD 4172                      (07) 3909 4666                      bneinfo@msc.com.au                      www.mscaustralia.com</p>	<p>Africa, North Asia, East Asia, South East Asia, Europe, Indian Subcontinent, Middle East, North America East &amp; West coast, Pacific Islands (inc New Zealand), South America</p>	<p>Mediterranean Shipping Co. Geneva</p>
<p><b>Mitsui OSK Lines (Australia) Pty Ltd</b>                      Suite 5A, 85 Hudson Road                      Albion QLD 4010                      (07) 3007 2100                      www.molpower.com</p>	<p>Africa, North Asia, South East Asia, East Asia, Europe Indian Subcontinent, Middle East, New Zealand, North America East &amp; West coast</p>	<p>Mitsui OSK Line; Mitsui OSK Bulk Shipping (Asia Oceania) Pty Ltd; MO Seaways Ltd</p>

Shipping/Agency contacts	Service by Region	Representing
<p><b>Monson Agencies Australia Pty Ltd</b>  Level 6, 193 North Quay, Brisbane QLD 4000  (07) 3192 9623  brisbane@monson.com.au  www.monson.com.au</p>		
<p><b>Neptune Pacific Agency</b>  0412 552 434  nnelen@neptunepacific.com  www.neptunepacificline.com</p>	Pacific Islands	Neptune Shipping Line
<p><b>NYK Line (Australia) Pty Ltd</b>  Level 1, Port Central 1, 2 Port Central Avenue,  Port of Brisbane QLD 4178  (07) 3835 1810  www.nykline.com</p>	North Asia, South East Asia, East Asia, Europe, Indian Subcontinent, Middle East, New Zealand, North America East & West coast	NYK Line, NYK Bulk & Projects, NYK Car Carriers, Crystal Cruises, NYK Cruises Co, Hachiuma Steamship Co. Japan
<p><b>Oceanic Shipping Agencies</b>  Ground floor, South Tower,  527 Gregory Terrace, Bowen Hills QLD 4006  1300 018 956  1300 060 489  sales@oceanicshipping.com.au  www.oceanicshipping.com.au</p>	North Asia, South East Asia, East Asia, Indian Subcontinent, Middle East, Pacific Islands	TS Lines, Greater Pacific Shipping
<p><b>OOCL Australia Pty Ltd</b>  Metroplex on Gateway 14, Suite 2  53 Metroplex Avenue, Murarrie QLD 4172  (07) 3899 3380  barry.knaggs@oocl.com  www.oocl.com</p>	North Asia, South East Asia East Asia, Europe, Indian Subcontinent, Middle East, New Zealand, North America East & West coast	OOCL
<p><b>Pacific Asia Express Pty Ltd</b>  95 Leichardt Street, Spring Hill QLD 4004  t.brinkworth@bne.pilship.com  (07) 3630 6100  www.pae.com.au</p>	Africa, East Asia, Europe, Indian Subcontinent, Middle East, New Zealand, North America & West Coast, North Asia, Pacific Islands, South East Asia	Pacific Direct Line; Pacific International Lines

## SHIPPING LINES & AGENTS CONTINUED

Shipping/Agency contacts	Service by Region	Representing
<p><b>Quay Shipping Australia Pty Ltd</b>                      Unit 13, 35 Paringa Road, Murarrie QLD 4172                      (07) 3908 1600                      qldsales@quay-shipping.com                      www.quay-shipping.com</p>	<p>East Asia, North Asia, Pacific Islands (inc New Zealand)</p>	<p>Pacific Forum Line; Sinotrans Container Line Co. Ltd</p>
<p><b>Seaway Agencies Pty Ltd</b>                      Level 3, 200 Creek Street, Brisbane QLD 4000                      (07) 3620 4900                      bne@seaway.com.au                      www.seaway.com.au</p>	<p>Africa, North Asia, East Asia, South East Asia, Europe, Indian Subcontinent, Middle East, North America East &amp; West Coast, Pacific Islands (inc New Zealand)</p>	<p>Compagnie; Hoegh Autoliners; Marfret; Sofrana; Marfret, Maersk (for documentation services only).</p>
<p><b>Sofrana Unilines</b>                      Level 3, 200 Creek Street, Brisbane QLD 4000 Australia                      (07) 3029 3190                      ldonsky@sofrana.com.au                      www.sofrana.co.nz</p>	<p>Pacific Islands and PNG</p>	<p>Sofrana</p>
<p><b>Strang International Pty Ltd</b>                      936 Nudgee Road, Northgate QLD 4013                      (07) 3267 8022                      strangbne@stxgroup.com.au                      www.stxgroup.com.au</p>		<p>Ok Tedi Limited</p>
<p><b>Sturrock Grindrod Maritime (Australia) Pty Ltd</b>                      Unit 17B, 20 Depot Street, Banyo QLD 4014                      (07) 3266 4499                      brisbane@sturrockgrindrod.com                      www.sturrockgrindrod.com</p>		<p>Representing various bulk tramp agencies</p>
<p><b>Swire Shipping</b>                      Level 14, 500 Queen Street, Brisbane QLD 4000                      (07) 3302 3300                      bnesales@swirecnco.com                      www.swireshipping.com</p>	<p>North America &amp; West Coast, Pacific Islands (inc New Zealand), South East Asia</p>	<p>Swire Shipping; China Navigation Co. Ltd</p>

Shipping/Agency contacts	Service by Region	Representing
<p><b>United Arab Agencies</b></p>	<p>Australia to/from the Middle East, Red Sea, Europe, Mediterranean, South East Asia, Indian Sub Continent, East Asia and West Africa</p>	<p>UASC</p>
<p><b>Wallenius Wilhelmsen Logistics</b>            Unit 11B, 23 James Street, Fortitude Valley QLD 4006            (07) 3000 7850            adam.burns@2wglobal.com            www.2wglobal.com</p>	<p>Africa, Europe, North America East &amp; West coast, North Asia, South East Asia, Pacific Islands (New Zealand)</p>	<p>Wallenius Wilhelmsen Logistics; Armacup</p>
<p><b>Wave Shipping Pty Ltd</b>            549 Queen Street            Brisbane QLD 4000            (07) 3832 3934</p>		<p>Representing BP Shipping Ltd, CSL Australia Pty Ltd, Geogas Trading, Oceangas Services, Cement Australia Ltd, &amp; various other Charterers and Shipping Lines worldwide.</p>
<p><b>Wilhelmsen Ships Service</b>            Unit 105.3c Da Vinci Business Park,            2-6 Leonard Drive, Brisbane Airport QLD 4008            (07) 3216 0680            wss.brisbane@wilhelmsen.com            www.wilhelmsen.com/shipsservice</p>		<p>Various liner project carriers, tramp tanker and cruise principals worldwide</p>
<p><b>Yang Ming (Australia)</b>            Unit 16/35 Paringa Road, Murrarie QLD 4172            (07) 3032 8509            phil.donohue@au.yangming.com</p>	<p>Asia, Europe, Americas, India Subcontinent, Middle East, South America</p>	<p>Yang Ming (Australia)</p>



A large flock of shorebirds taking to the sky. PBPL's 12 ha Shorebird Roost can accommodate up to 15,000 migratory and resident shorebirds.

ROAD AND RAIL CONNECTION 39

PORT LIMITS 40

PORT OF BRISBANE FISHERMAN  
ISLANDS MAP 42

PORT OF BRISBANE TRADE  
PRECINCT MAP 44

# MAPS



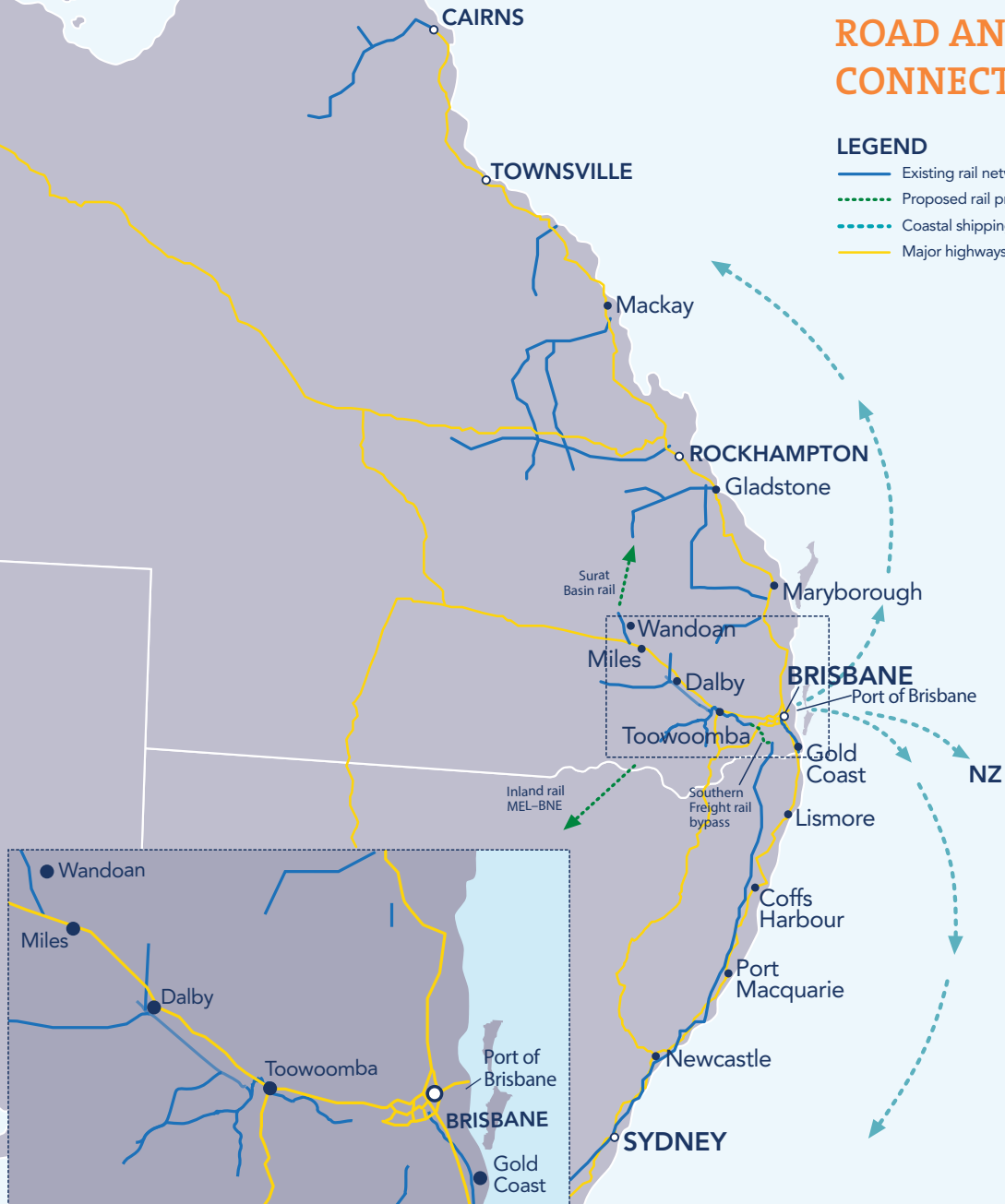
Photo by ben vos productions.



# ROAD AND RAIL CONNECTION

## LEGEND

- Existing rail networks
- - - Proposed rail projects
- - - Coastal shipping concept
- Major highways

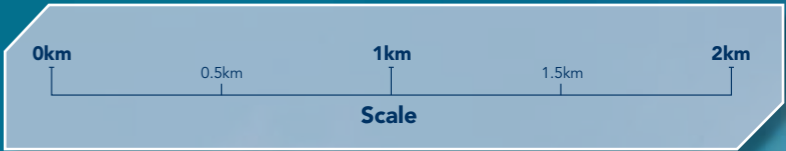


## PORT LIMITS

The Port of Brisbane's limits include the waters within the boundaries on the map below.



Please note that a full description of the Port boundaries can be accessed via the Maritime Safety Queensland website at [www.msq.qld.gov.au/Shipping/Port-procedures/Port-procedures-brisbane](http://www.msq.qld.gov.au/Shipping/Port-procedures/Port-procedures-brisbane)



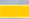
IOR Terminals	1
Toll Customised Solutions	2
Caltex Tank Farm	3
Tzaneros & Port Gate Logistics	4
Carter Holt Harvey	5
Steelforce	6
Caltex Truck Stop	7
Queensland Combined Emergency Services Academy	8
Svitzer Australia	9
PB Towing	10
PBPL Operations Base	11
Moreton Island Ferries	12
Dredging International Australia	13
QPS Water Police	14
Public Boat Ramp	15

Future Electricity Substation	16
General Purpose Wharf and Terminal	17
Queensland Bulk Handling	18
SAMI Bitumen Technologies	19
Coal Wharf	20
Sunstate Cement	21
Wharf Overflow Area	22
Caltex Crude Wharf	23
Queensland Commodity Exports	24
Multi-user Terminal	25
GrainCorp	26
Seafarers Centre	27
Prixcar PDI	28
Prixcar Storage Area	29
Patrick Autocare Storage	30
Discount Superstores Group	31

PBPL Short Term Storage	32
Patrick Autocare Storage	33
Patrick Autocare PDI	34
Visitors Centre and Observation Cafe	35
Port Office (PBPL Head Office)	36
Port Central 1	37
Australian Customs and Border Protection Container Examination Facility	38
AAT Terminal	39
Patrick Autocare	40
Brisbane Multimodal Terminal (BMT)	41
Chalmers Industries Container Park	42
Chalmers Freight Station	43
Public Weighbridge	44
DP World Container Terminal	45
DB Schenker	46

Qube Logistics	47
Qube Logistics Container Park	48
Qube Logistics	49
Shorebird Roost	50
Patrick Container Terminal (Brisbane Autostrad®)	51
Patrick Port Services	52
Patrick Port Services Container Park	53
IPS Logistics	54
Patrick CargoLink	55
Patrick Truck Marshalling Area	56
IPS Expansion Area	57
Brisbane Container Terminals	58
Reclamation Site Office	59
Future Port Expansion Area	60

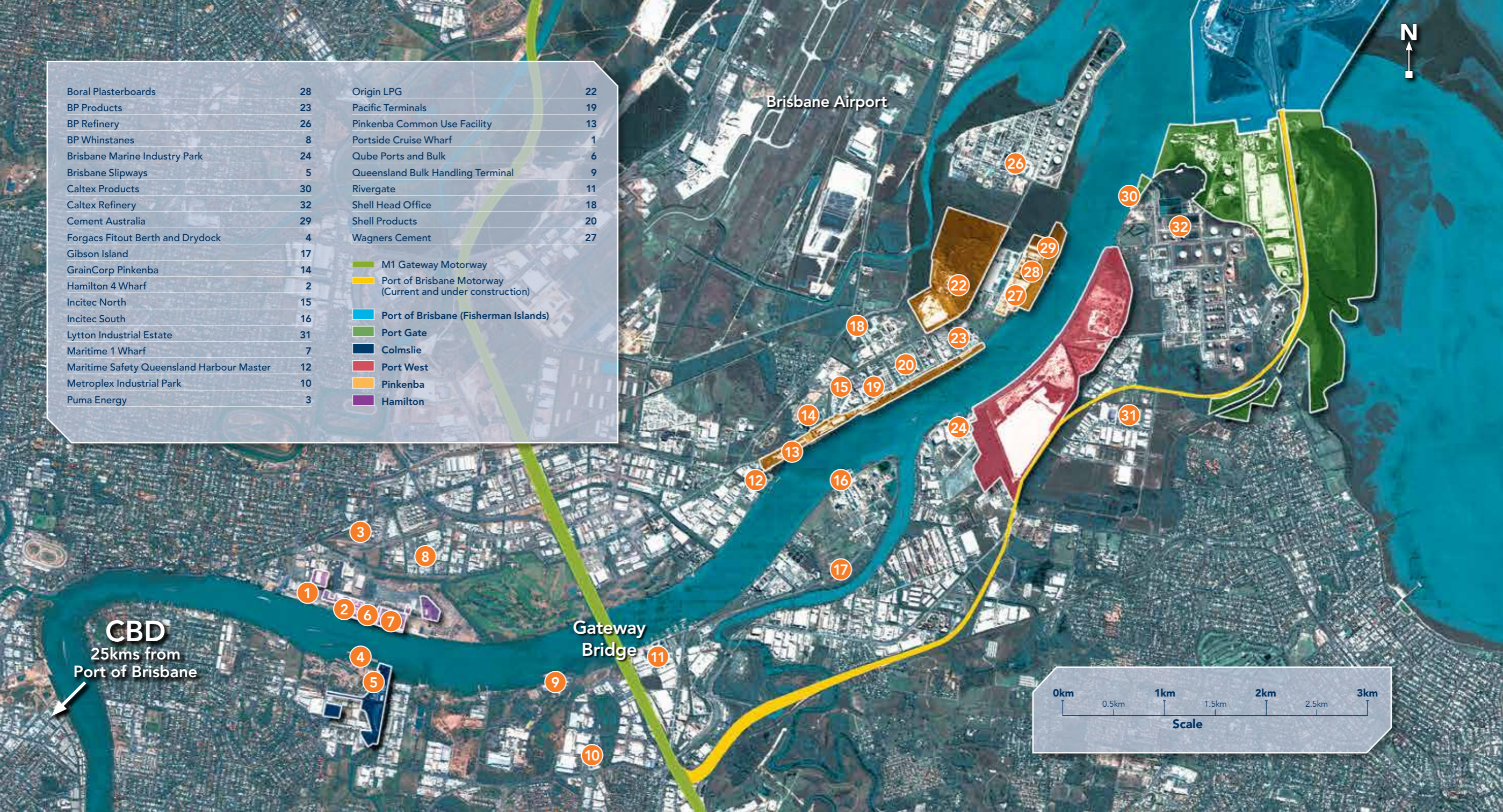


Boral Plasterboards	28	Origin LPG	22
BP Products	23	Pacific Terminals	19
BP Refinery	26	Pinkenba Common Use Facility	13
BP Whinstanes	8	Portside Cruise Wharf	1
Brisbane Marine Industry Park	24	Qube Ports and Bulk	6
Brisbane Slipways	5	Queensland Bulk Handling Terminal	9
Caltex Products	30	Rivergate	11
Caltex Refinery	32	Shell Head Office	18
Cement Australia	29	Shell Products	20
Forgacs Fitout Berth and Drydock	4	Wagners Cement	27
Gibson Island	17		
GrainCorp Pinkenba	14	 M1 Gateway Motorway	
Hamilton 4 Wharf	2	 Port of Brisbane Motorway (Current and under construction)	
Incitec North	15	 Port of Brisbane (Fisherman Islands)	
Incitec South	16	 Port Gate	
Lytton Industrial Estate	31	 Colmslie	
Maritime 1 Wharf	7	 Port West	
Maritime Safety Queensland Harbour Master	12	 Pinkenba	
Metroplex Industrial Park	10	 Hamilton	
Puma Energy	3		

Brisbane Airport

**CBD**  
25kms from  
Port of Brisbane

Gateway  
Bridge



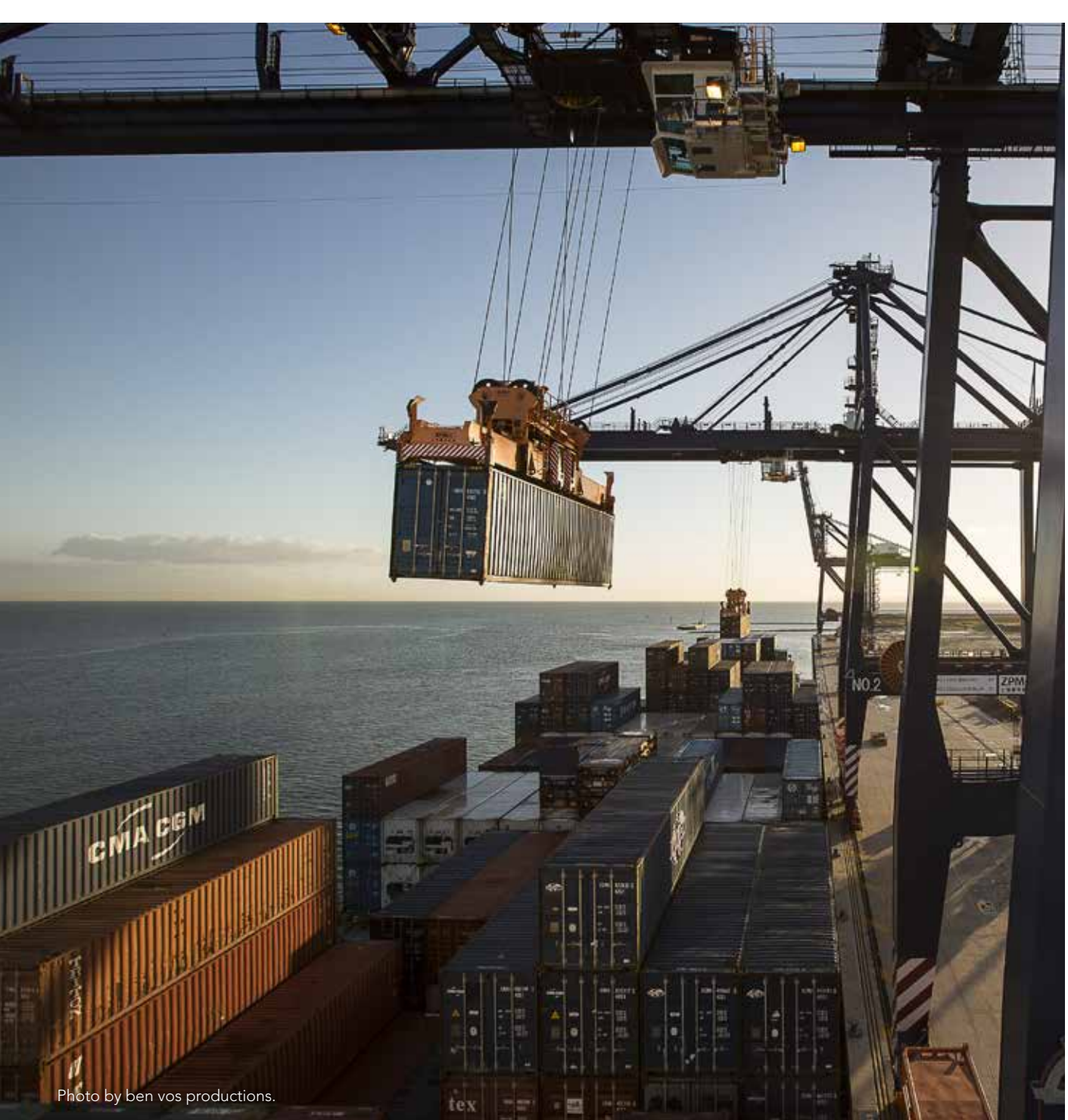


Photo by ben vos productions.



# Connecting Queensland trade to the World

To find out how the Port of Brisbane can provide your business with opportunities to grow, visit [www.portbris.com.au](http://www.portbris.com.au) or contact our Trade Development Team on +61 7 3258 4888 or [info@portbris.com.au](mailto:info@portbris.com.au).

  
**PORT of BRISBANE**  
*Here for the future*

## Port of Brisbane Pty Ltd (PBPL) contacts:

Department	Name	Phone
BMT	Barry Martin	3258 4855
Community Relations	Edward Harwood	3258 4677
Dredging	Peter Nella	3258 4761
Reclamation	Jason Kemble	3258 4866
Berth Enquiries and Bookings	Peter Brabant	3258 4621
Financial Trade	Kashif Artani	3258 4722
Hydrographic Survey	Giles Stimson	3258 4820
Information Technology	Azadeh Vazirzadeh	3258 4748
Infrastructure and Environment	Rob Nave	3258 4763
Maintenance	Malcolm Timm	3258 4771
Media Enquiries	Emily Griffiths	3258 4738
Trade and Customer	Andrew Brinkworth	3258 4728
Trade Services	Ruth Perry	3258 4711

Department	Name	Phone
Port Operations & Pollution (Oil and Marine)	Alan Turner	3258 4618
Property and Leasing	Geraldine Logan	3258 4932
Property Development	Mark Neander	3258 4772
Procurement	Erin Bulger	3258 4832
Statistics and Trade Analysis	Kashif Artani	3258 4722
Emergency Response Port Operations	Security	3258 4601
Port Office Reception		3258 4888
MSIC Centre		3258 4880
Security	24 hours	3258 4601

\* Please note the international dialling code for Australia is +61 and the area code for Queensland is 7.



Port Office, 3 Port Central Avenue, Port of Brisbane QLD 4178 | Locked Mail Bag 1818 Port of Brisbane QLD 4178  
Telephone: +61 7 3258 4888 | Facsimile: +61 7 3258 4703 | Email: [info@portbris.com.au](mailto:info@portbris.com.au) | [www.portbris.com.au](http://www.portbris.com.au)

**Disclaimer:** Whilst every effort has been made to ensure that the information contained in this publication is accurate, the Port of Brisbane Pty Ltd gives no warranty regarding this information and accepts no liability for any inconvenience, or any direct or consequential loss, arising from reliance upon this information. Readers should undertake their own enquiries in relation to any of the facts referred to before acting upon them.



**Mixed sources**  
Product group from well managed  
forests and other controlled sources  
[www.fsc.org](http://www.fsc.org) Cert.no.SGS-COC-005 396  
©1996 Forest Stewardship Council

*Cover and handbook is printed on ecoStar Paper.  
ecoStar is an environmentally friendly paper which  
is manufactured from 100% recycled paper waste  
in a Process Chlorine Free environment.*