

Monthly progress update PORT DRIVE UPGRADE

October 2016

Construction is well underway on the Port of Brisbane's Port Drive Upgrade.

This monthly progress update provides an overview of the works undertaken since the start of construction and the upcoming activities planned for the month ahead.

Construction activities undertaken last month

Early works on the [Port Drive Upgrade](#) are progressing well, with temporary line marking and concrete barrier installation nearing completion. These works will be completed in late October 2016.



Planned construction activities during October/November

During October/November, you may notice an increase in the number of construction road workers and vehicles associated with the project, as well as an increase in construction activities as the project progresses.

Works will involve (site and weather conditions permitting):

- installation of erosion and sediment controls
- installation of construction site entry and exit gates
- removal of the Port of Brisbane advertising board, traffic signage and the Port of Brisbane entry sign
- building the new temporary shared user path between Tanker Street and Kite Street
- service location and geotechnical investigations continuing between Pritchard Street and Captain Bishop bridge are continuing between October and November
- removal of selected trees along Port Drive in preparation for major construction activities.

Vegetation removal

From mid-October 2016, selected tree clearing along Port Drive will start in preparation for major construction activities.

Site clearing activities will be undertaken in accordance with all required approvals. Fauna spotter-catchers will conduct pre-clearing surveys and be on site during clearing activities.

What to expect during construction

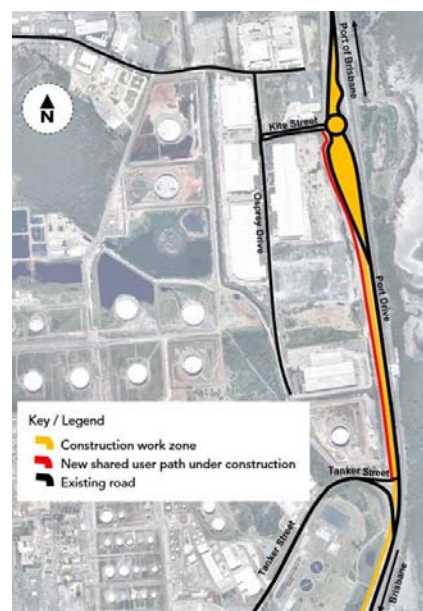
During construction, you can expect to experience changed traffic conditions as a result of:

- an increased number of construction vehicles entering and leaving the project site
- further, temporary speed reductions supported by additional traffic control and signage
- additional measures in place to ensure the safety of onsite workers
- noise associated with the use of construction equipment.

Please drive carefully, be aware of changed traffic conditions and observe the speed restrictions.

Upcoming work areas

The map below identifies upcoming work areas.



Construction hours

The majority of works will be carried out during the day between 6am and 6pm, Monday to Friday. There may be some out of hours' work required – which will be carried out between 6pm and 6am.

Keeping you informed

Seymour Whyte Constructions and PBPL are committed to keeping stakeholders informed as the project progresses. You can stay up-to-date via these monthly updates or by visiting the [project website](#).

For detailed information about specific upcoming works, please register to receive operational notifications by [email](#).

If you have a question or need more information, please contact the project via the website, email community@seymourwhyte.com.au or call the 24 hour hotline 1800 895 929.