



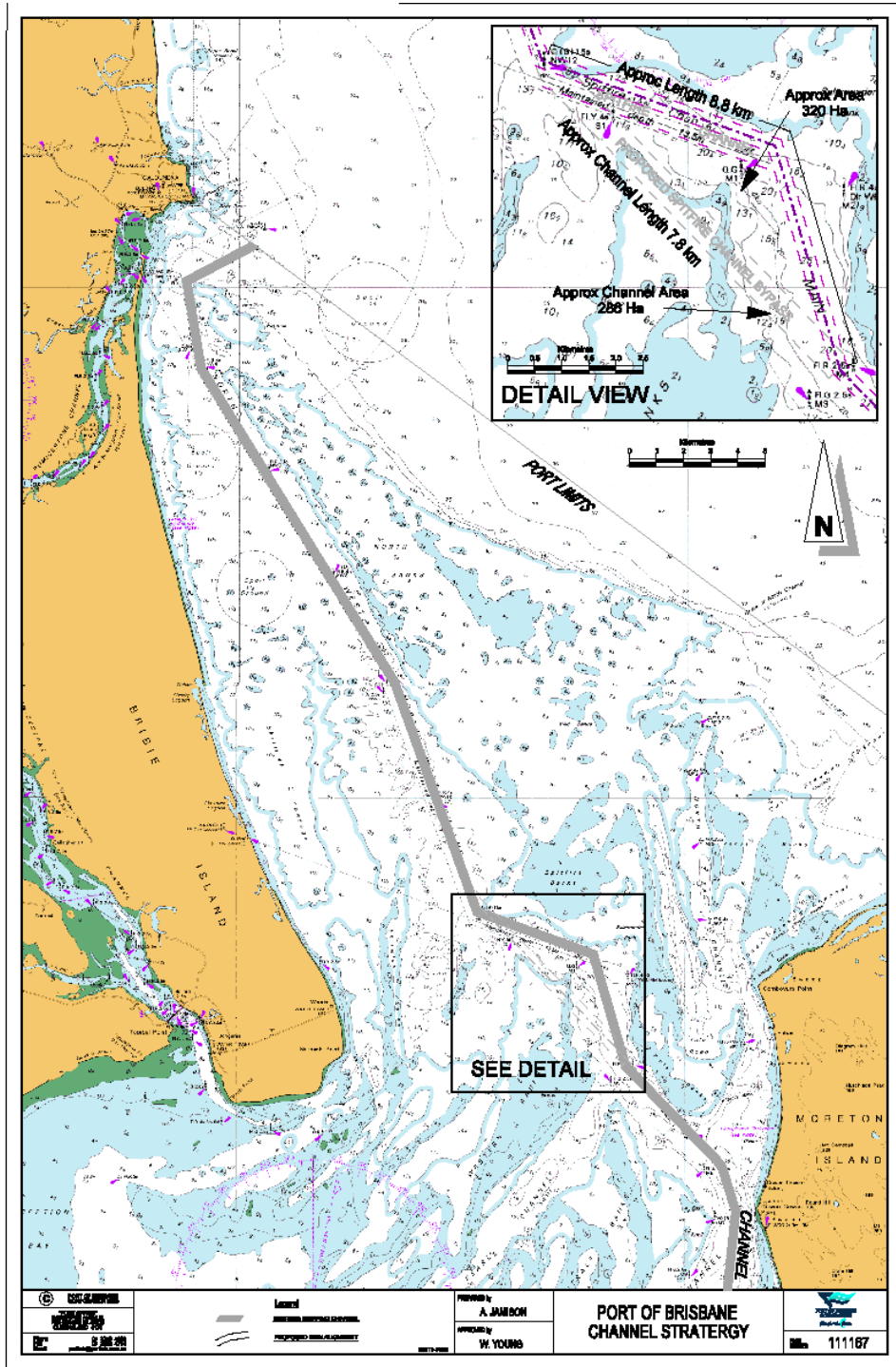
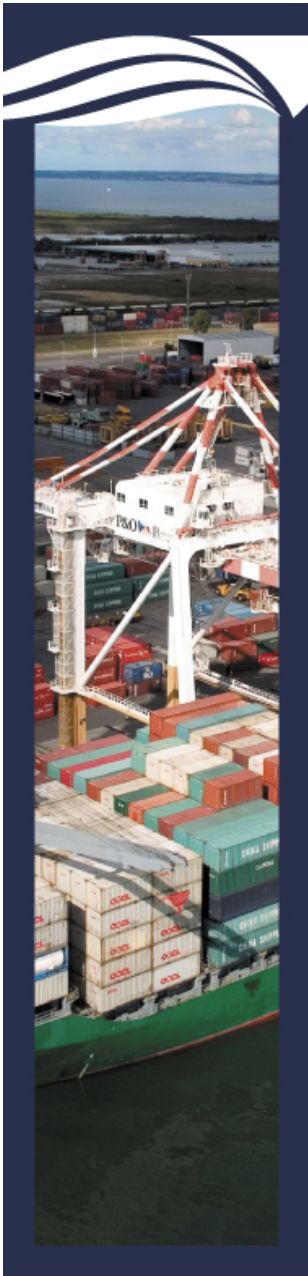
PORT of BRISBANE

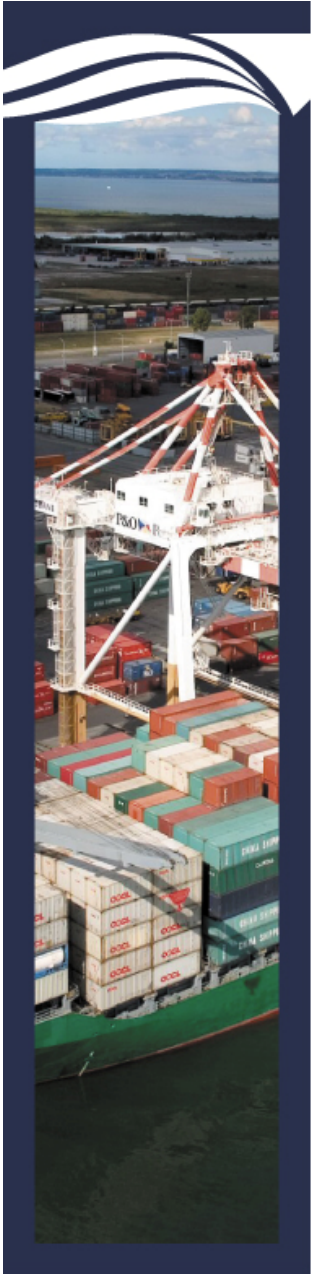
Here for the future

**SPITFIRE CHANNEL
SAND EXTRACTION**

IMPACT ASSESSMENT PROCEDURES





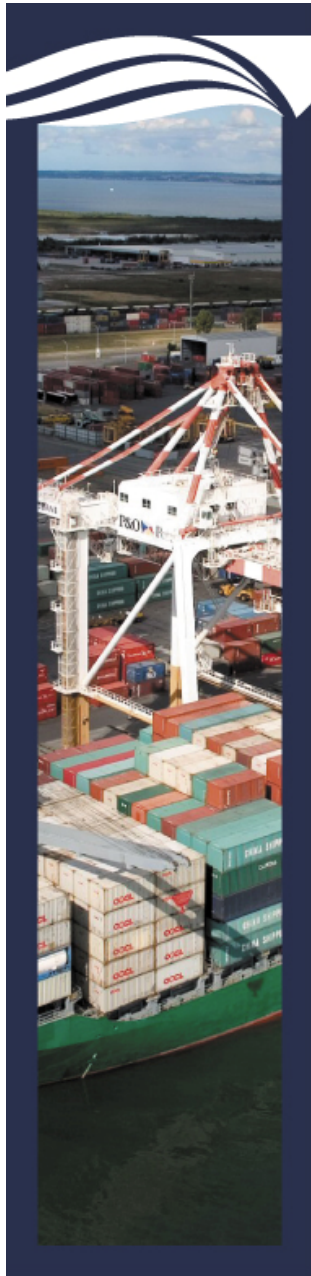



PORT of BRISBANE
Here for the future



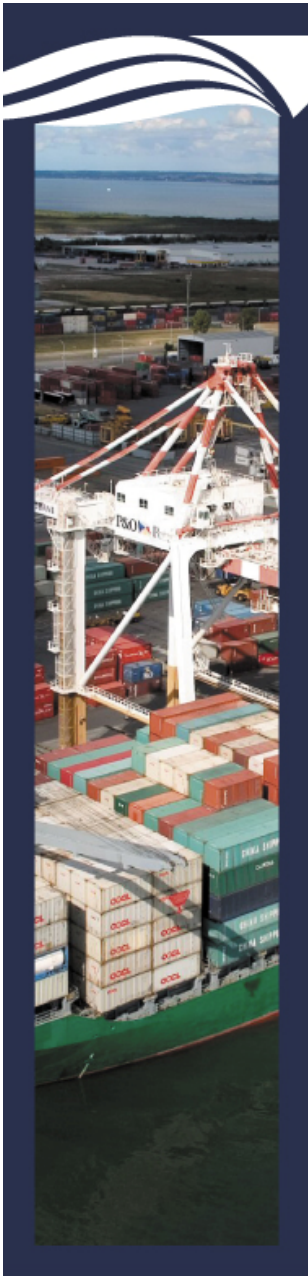
Why does PBC need sand?

- Port development has long lead time
- Trade growth rates of 6-8% in mid 1990's have been far exceeded (averaging approx. 12% and up to 15%)
- Need to “bring on land” far quicker than planned
- Insufficient land = trade inefficiency = higher trade costs
- Insufficient reclamation material from maintenance dredging



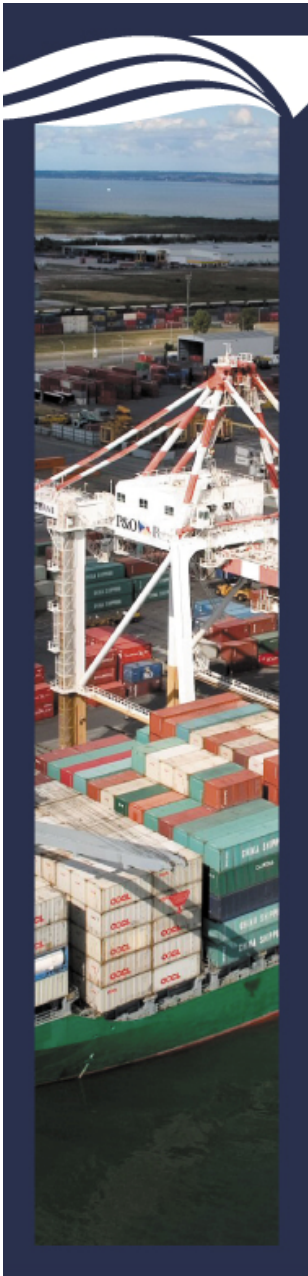
How much sand does PBC need?

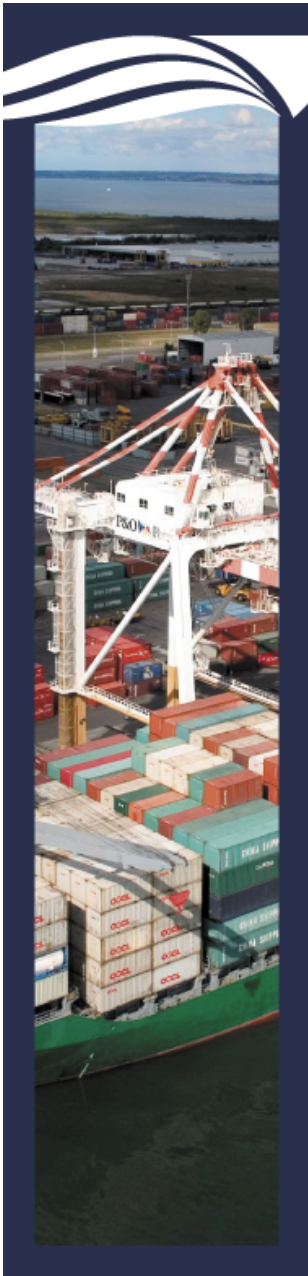
- Approx. 1 million cubic metres each year for the next 15 years
- Mainly for Future Port Expansion but also allows for other sites
- Volume extracted to meet trade demand (flexibility)



How will sand be extracted?

- Use the Corporation's dredger the *Brisbane*
- May contract a larger dredge if convenient to deliver a stockpile
- Will extract sand to result in channel improvement (channel length reduced by 11% and 3 sharp turns removed)
- Long term improvement in channel efficiency and safety





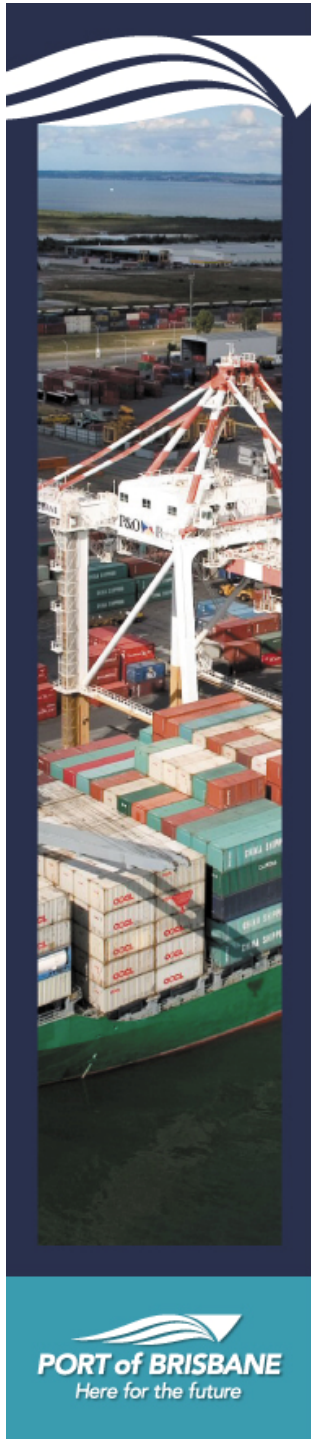
Legislative approach to assessment and approvals

Legislation Options

- No trigger for EIS under any State Legislation

Two options –

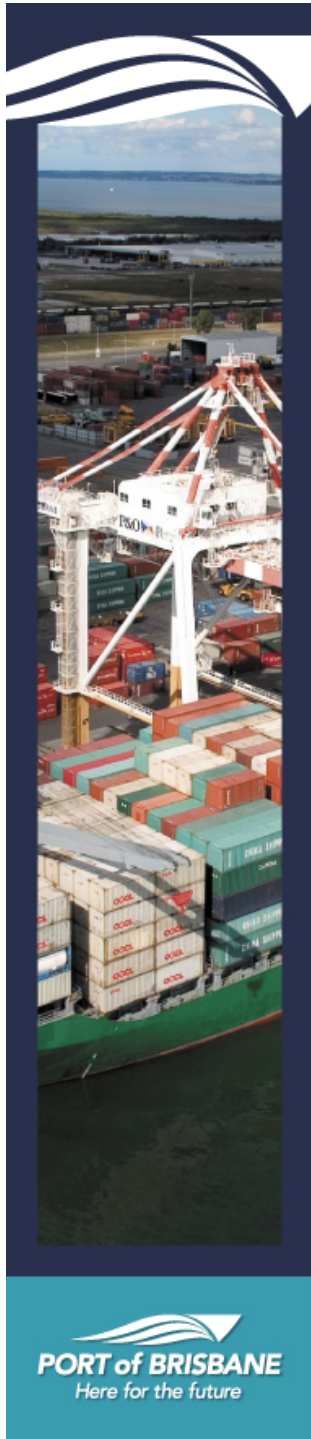
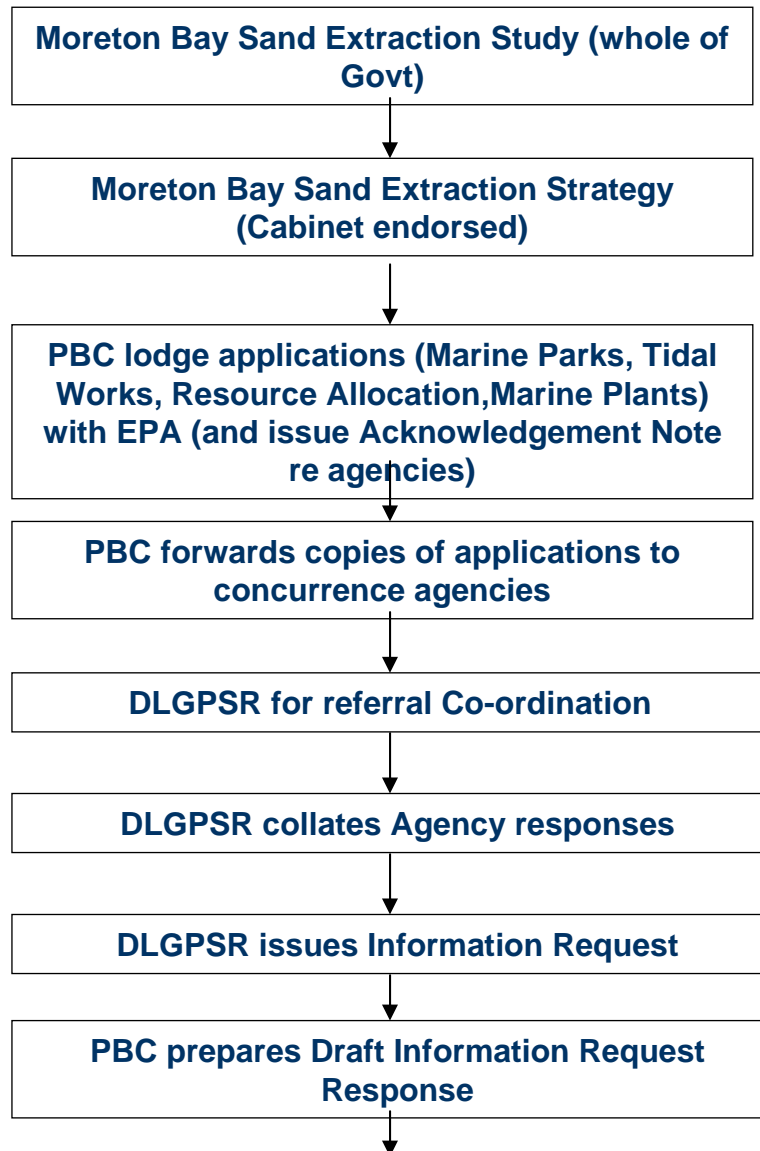
1. Could declare “Project of State Significance” under *State Public Works Development and Organisation Act* to trigger an EIS (**DSDI** would oversee/ manage process)
2. Use existing EPA process involving Integrated Planning Act for dredging (**EPA** to oversee/manage process)



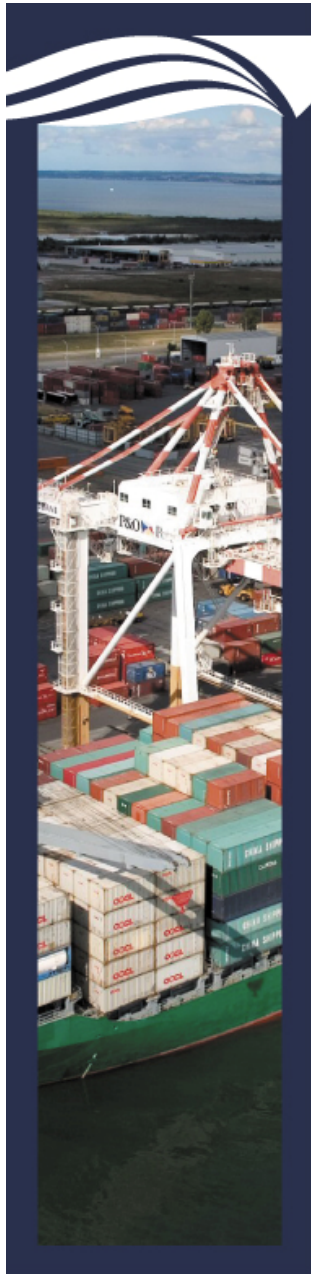
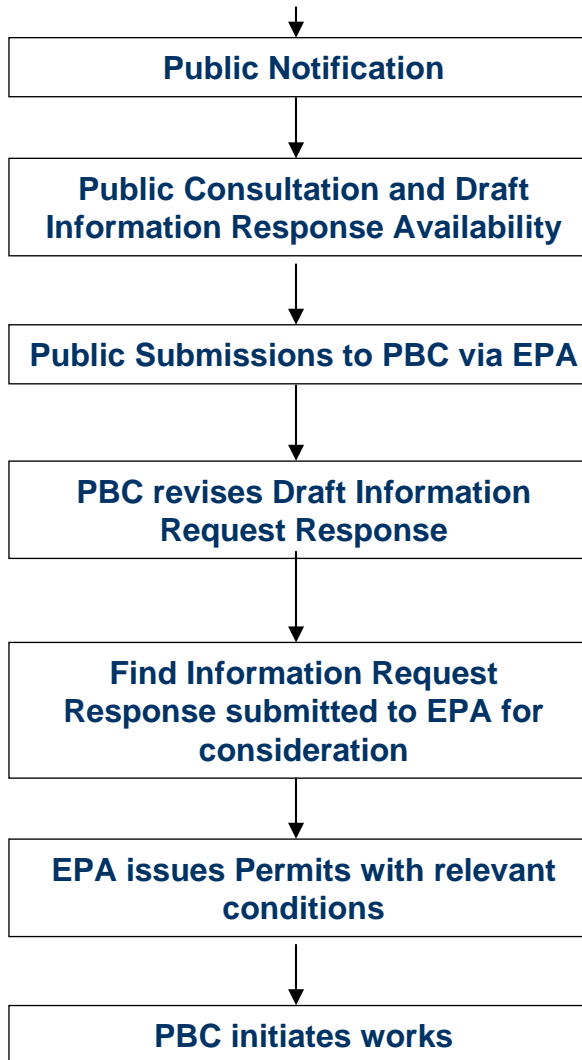
PBC approach

- Adopting IPA processes that are tailored for dredging
- Existing assessment process for dredging in Moreton Bay which involves Resource Allocation, Marine Parks permit, Tidal Works Permit and Marine Plants permit
- Includes public consultation/review process (at PBC request)

State Approvals Process

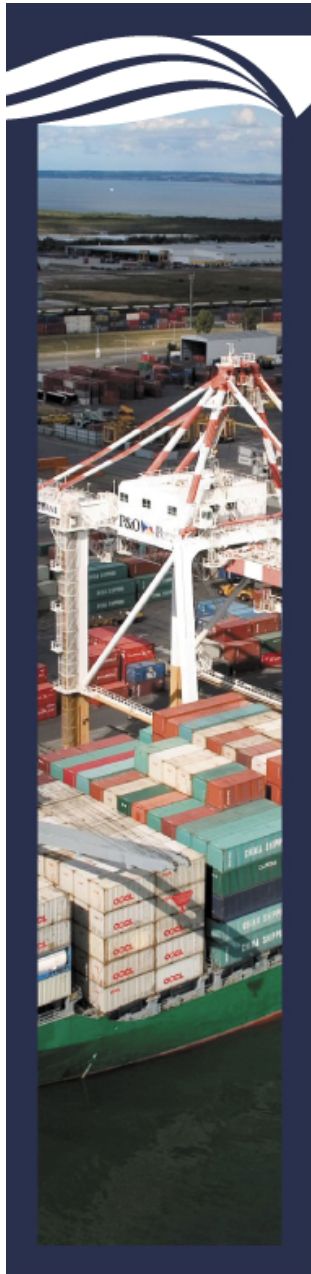


State Approvals Process (contd)



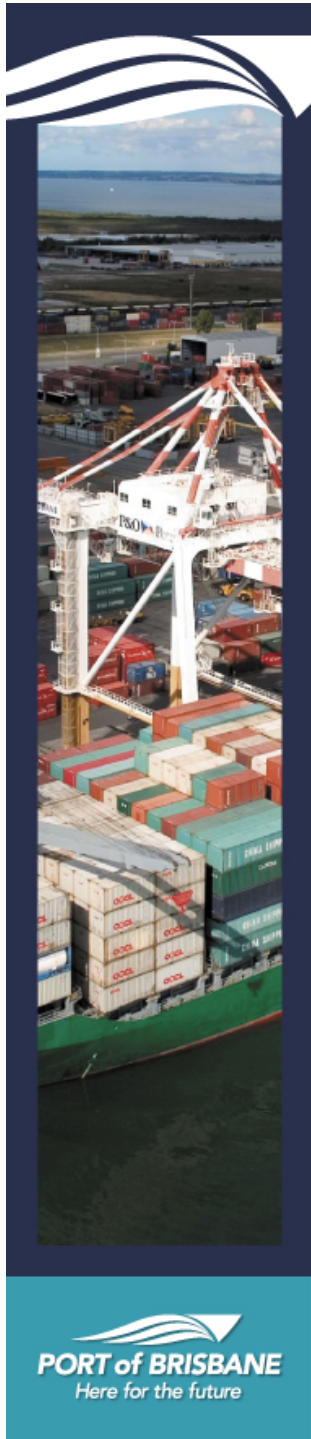
Comparisons between Environmental Impact Study and Integrated Development Assessment System

	EIS	IDAS
Project Justification	Yes	Yes
Consideration of project alternatives	Yes	Yes
Public Notification	Yes, required	Yes, Ministerial directive
Opportunity for public input to Terms of Reference	Via public notice	All issues addressed via standard guidelines (cover all economic, social, environmental relevant issues)
Public Consultation and timing	40 days	30 days (most information publicly available)
Public review of documentation supporting applications	Yes (upon study completion)	Yes (draft Information Request Response)
Public comments on applications	Yes (draft EIS)	Yes (draft Information Request Response)

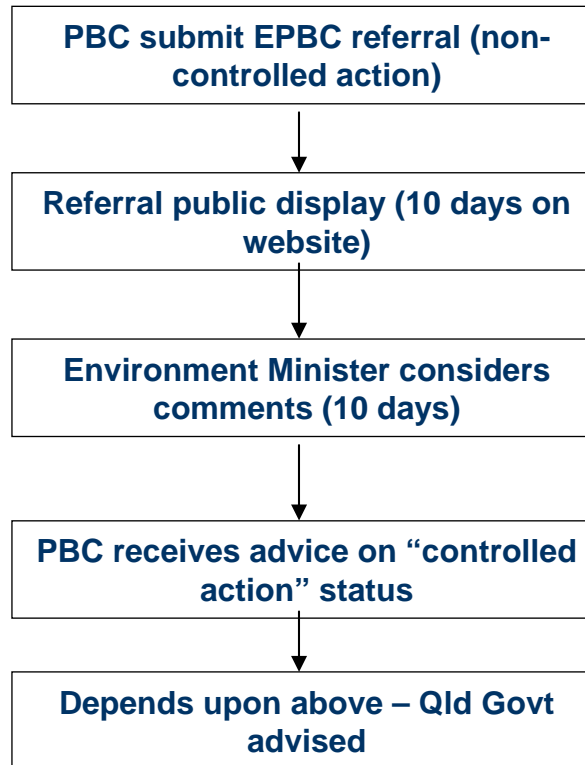


Environment Protection Biodiversity Conservation Act

- Designed to protect Matters of National Environmental Significance
- For PBC
 - RAMSAR sites
 - threatened/rare species
 - listed migratory species
- Triggers for nuclear or Commonwealth Action, Commonwealth Marine Area etc not relevant

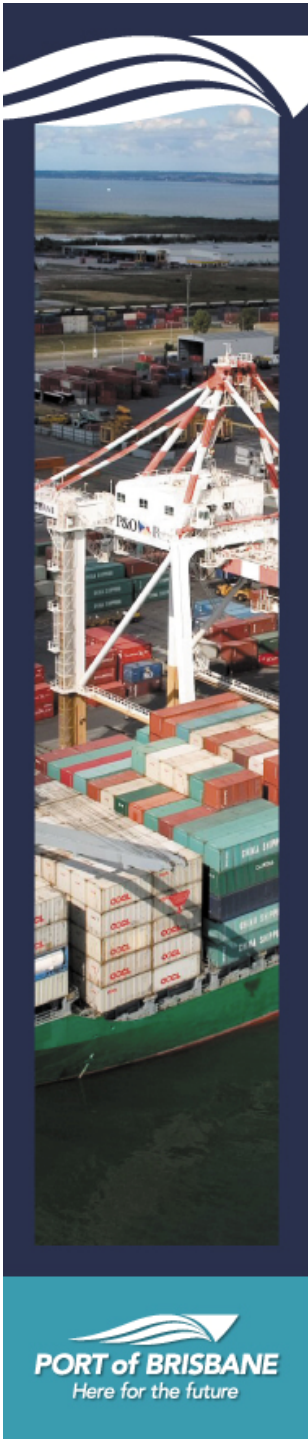


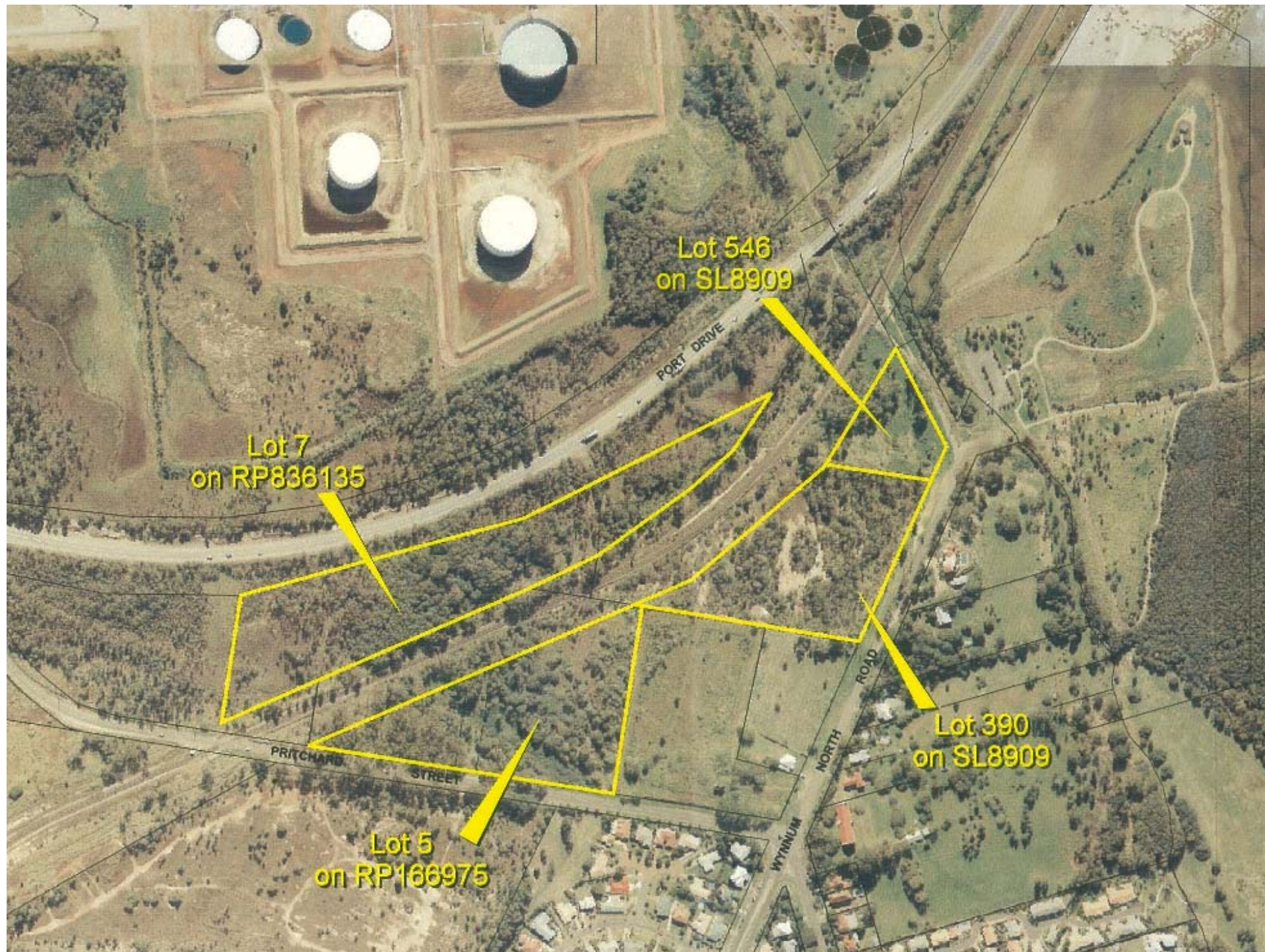
Commonwealth Approvals Process



Public consultation

- Public notices
- One-on-one consultation with interested parties (September/October)
- Independent facilitator
- Public review of PBC applications
- Opportunity to comment direct to EPA





Lot 7
on RP836135

Lot 546
on SL8909

Lot 390
on SL8909

Lot 5
on RP166975

PORT DRIVE

PRITCHARD STREET

WYNNUM NORTH ROAD

