



PORT of BRISBANE

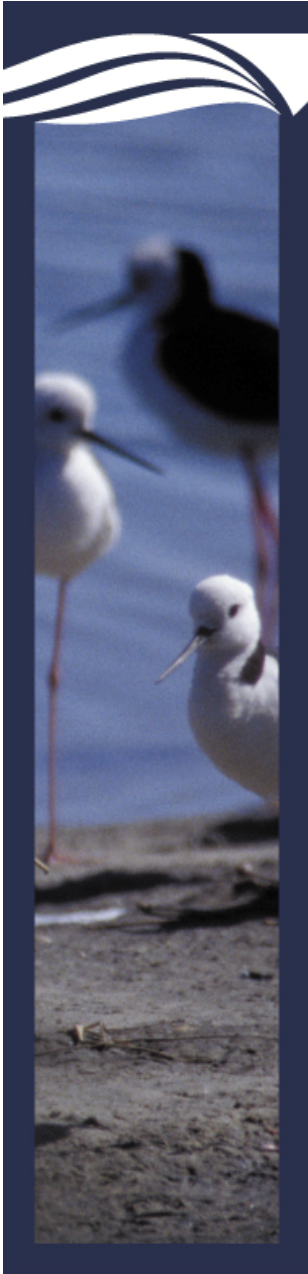
Here for the future

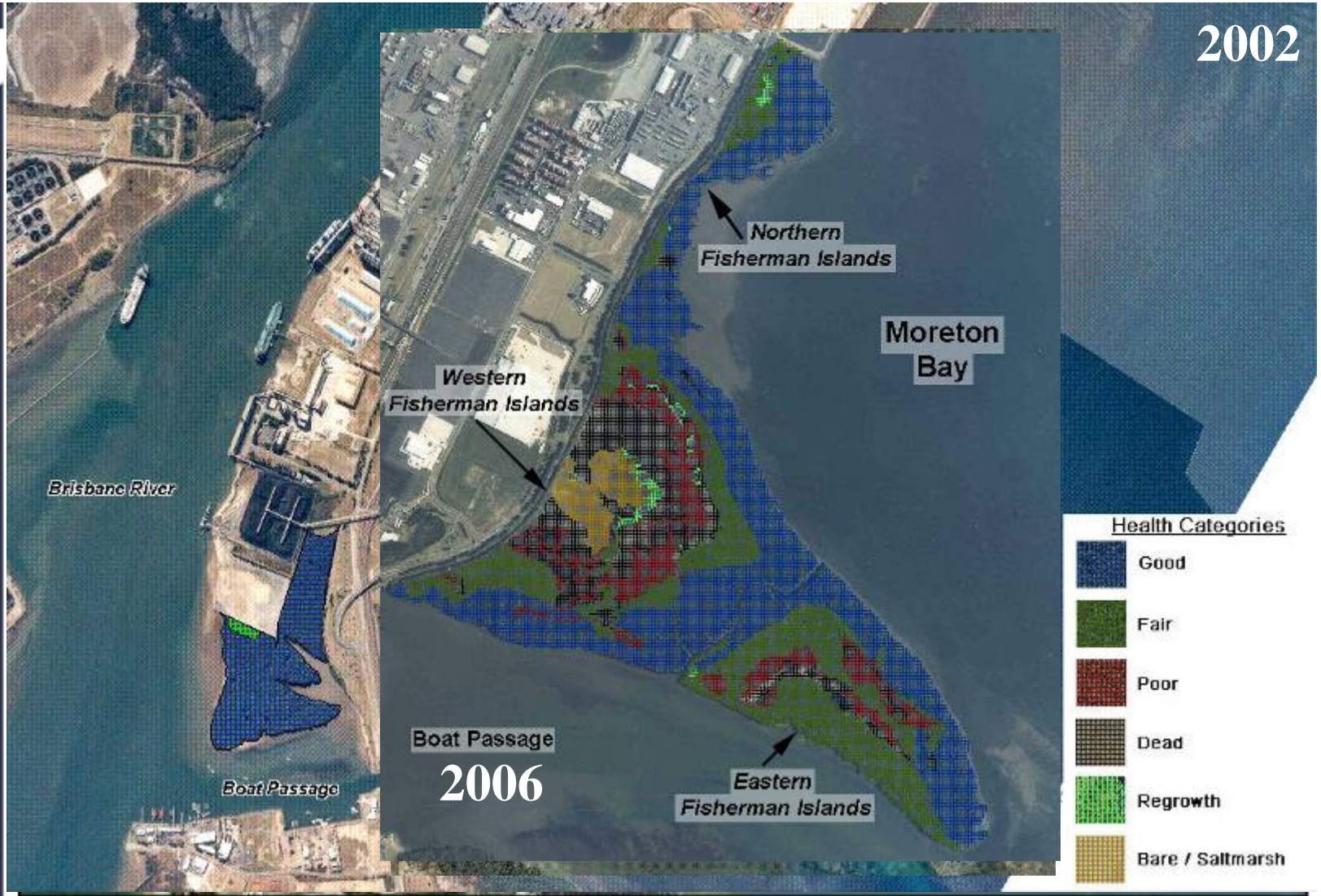
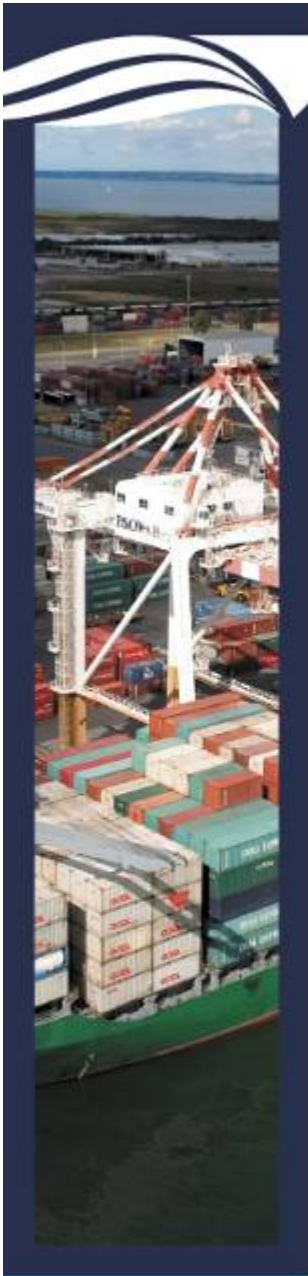
Port of Brisbane Mangrove Health

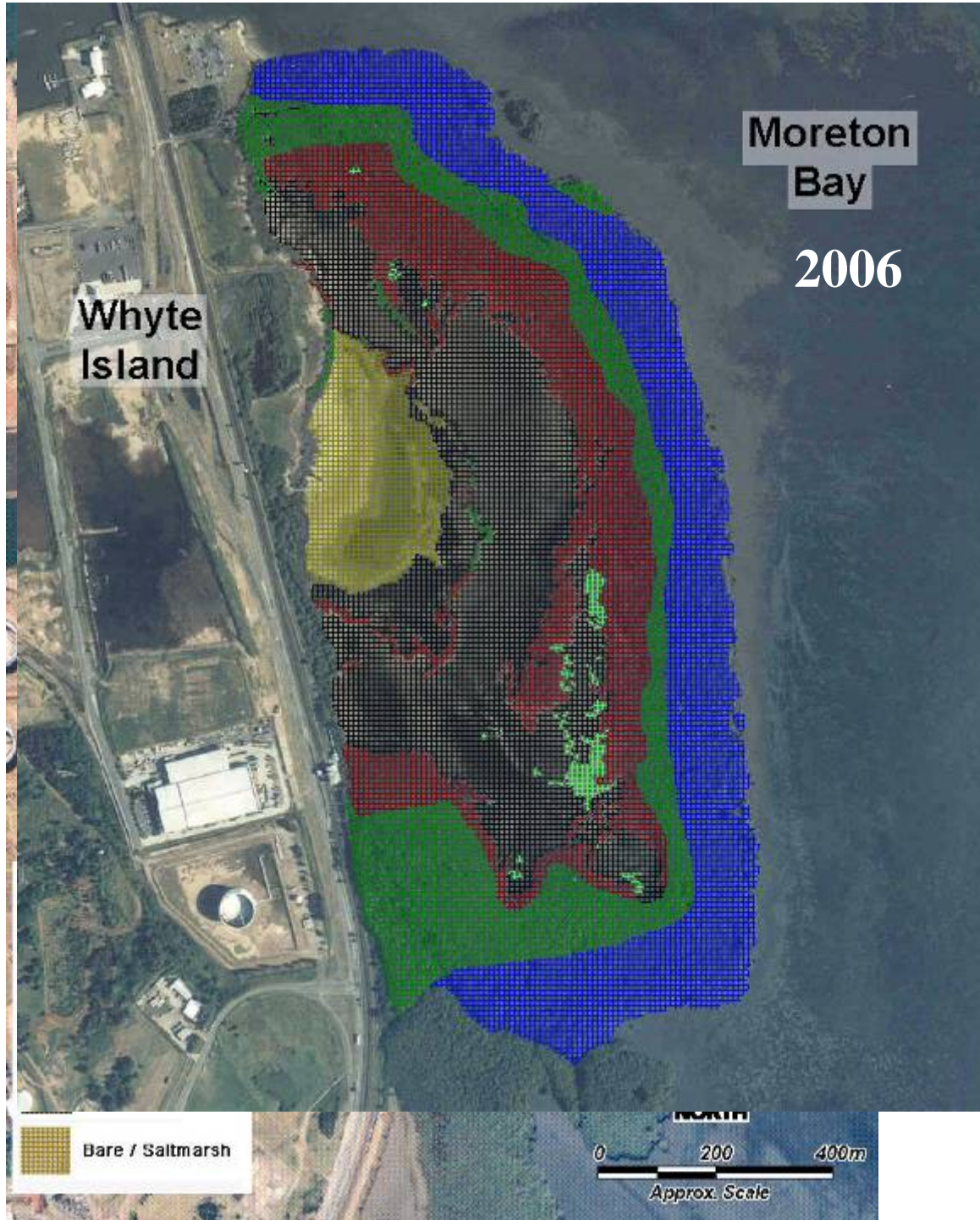
Community Consultative Committee – 9 May 2007

The Issue

- Noted areas of degraded mangroves adjacent the Port area in 1999
- Initial study commissioned (WBM) in 1999, with report 2000
- Subsequent surveys 2002, 2004, 2006
- Formed Working Group of Stakeholders (EPA, QP&WS, DPI&F, QR, BCC)







Why are mangroves dying?

- strong correlation between dead/degraded mangroves and ponded water
- reason for ponded water, or on-going impacting processes are many and varied –
- can be broken down into three broad categories :
 - natural
 - long term rainfall patterns
 - seagrass wracks
 - land-building and coastline changes
 - human induced
 - changes to hydraulics (road construction)
 - dredging and placement
 - nutrient inputs
 - toxic inputs
 - sedimentation rates
 - combination of above

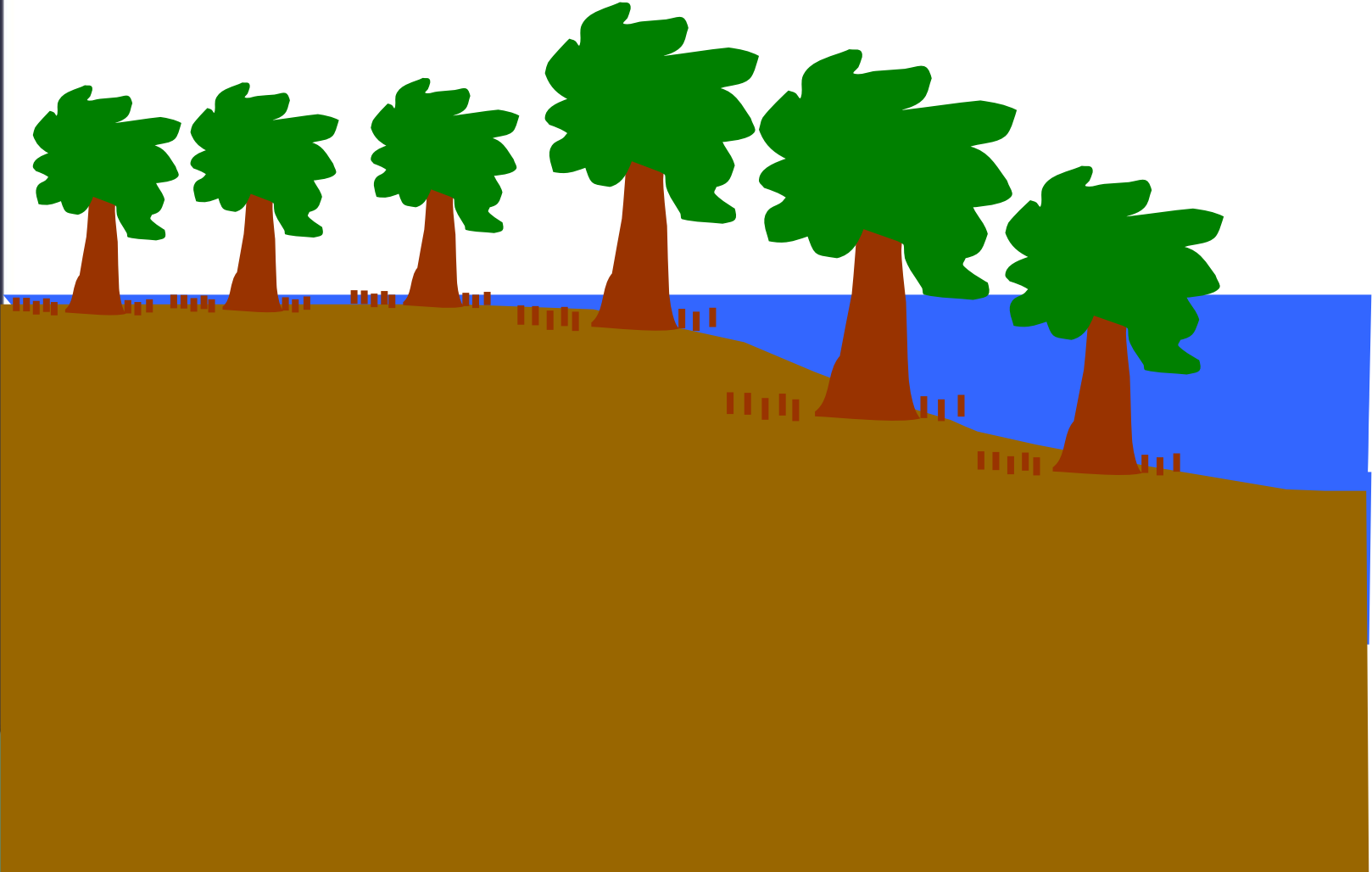
What can we rule out?

- Important to note that this is not limited to Port area, and is evident in many areas in Western Moreton Bay – as such site specific issues unlikely as main.

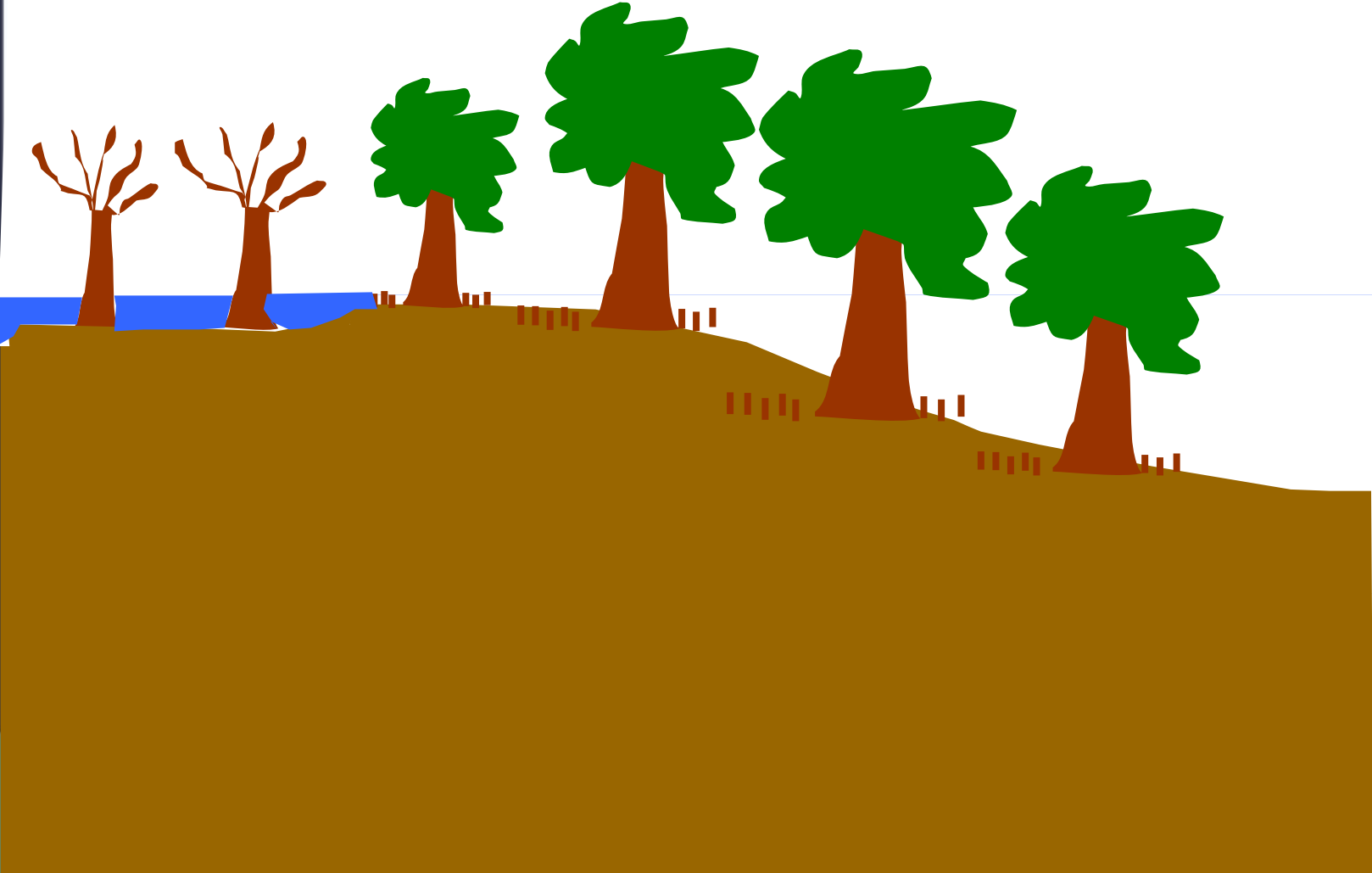


What can we rule out?

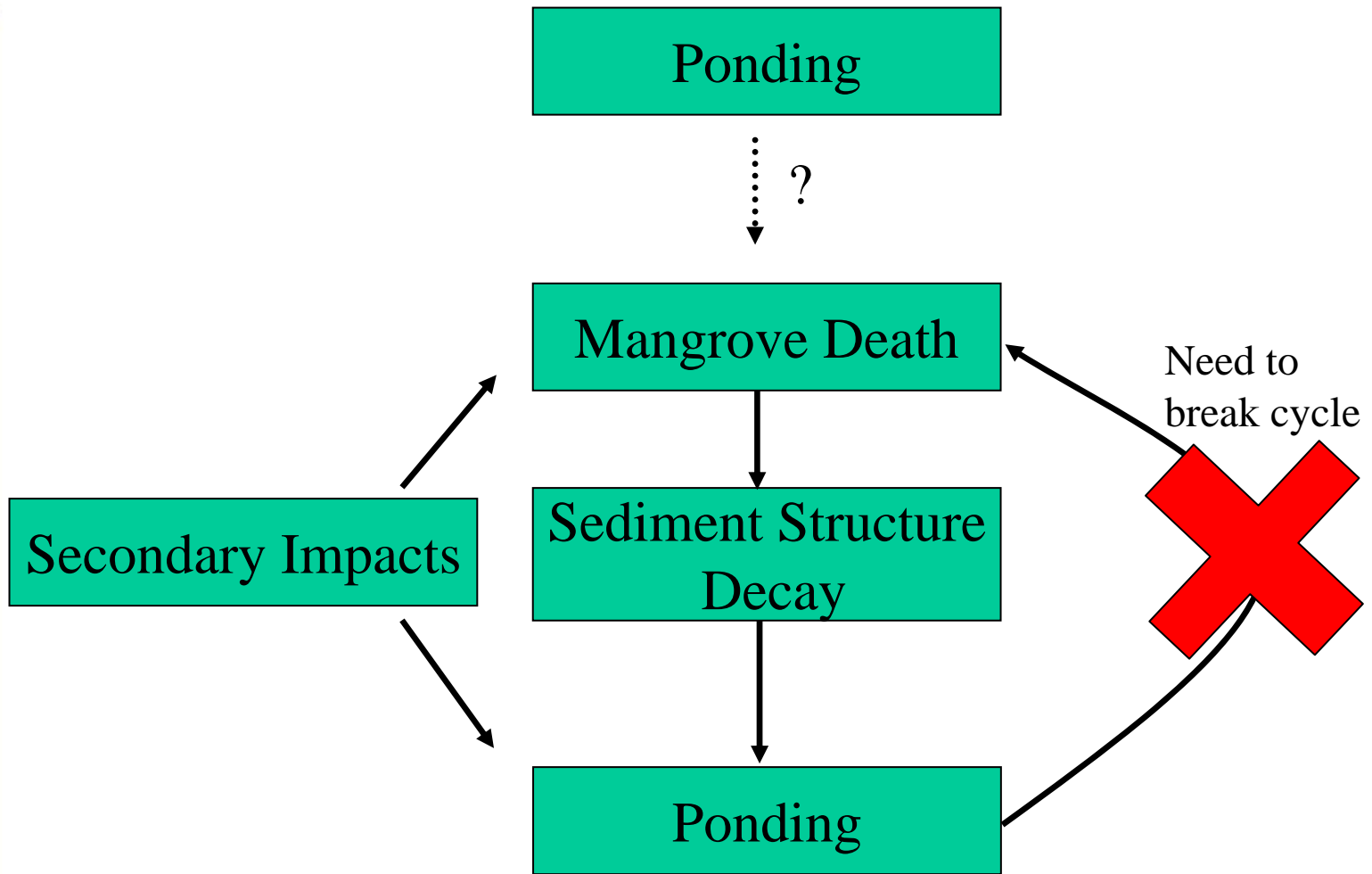
- Important to note that this is not limited to Port area, and is evident in many areas in Western Moreton Bay – as such site specific issues unlikely as main.
- Sediment chemistry to date doesn't indicate any hydrocarbons, heavy metals or pesticides/herbicides outside expected ranges
- High nutrients – but not likely to be primary cause
- No evidence of phytoplankton
- Evidence of insect attack, but not likely to be primary cause




PORT of BRISBANE
Here for the future




PORT of BRISBANE
Here for the future



Where to from here?

- additional works done in 2006 survey to rule out herbicides/pesticides and look at long-term changes in coastline
- established mangrove workshop with experts in mangrove ecology (UofQ, Griffith, Herbarium, DPI&F, QP&WS, EPA)
- workshop tomorrow (10 May) to look at mangrove areas and discuss possible processes based on experience of various participants
- establish way forward, either additional research to rule out other processes, or rehabilitation works.



PORT of BRISBANE

Here for the future

Port of Brisbane Mangrove Health Workshop

10 May 2007